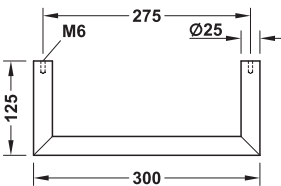
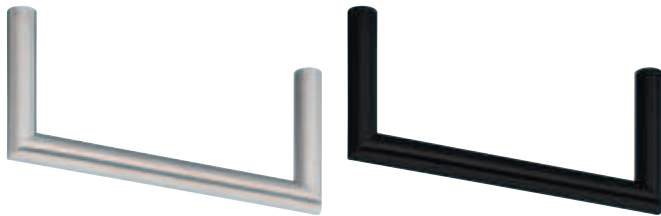


Coat hanger rail



- > Material: Stainless steel, quality 1.4301/AISI 304
- > Area of application: For mounting beneath the shelf
- > Height: 125 mm
- > Rail Ø: 25 mm

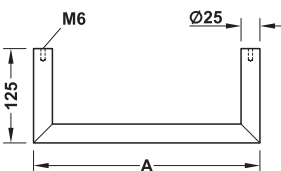
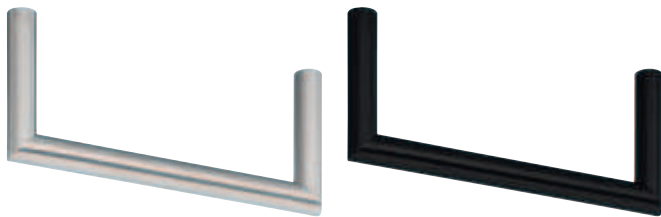
Length mm	Finish/colour	Cat. No.
300	Satin brushed	843.68.000
	Satin black, RAL 9017	843.68.020

Packing: 1 piece

**Customised Topco services**

Other sizes and versions available as Topco service.

Coat hanger rail – Topco



- > Material: Stainless steel, quality 1.4301/AISI 304
- > Area of application: For mounting beneath the shelf
- > Height: 125 mm
- > Rail Ø: 25 mm

Length mm	Finish/colour	Cat. No.
Fixed length (up to 2000 mm)	Satin brushed	843.68.009
	Satin black, RAL 9017	843.68.008

Packing: 1 piece

**Order reference**

Required number of supports for stabilisation reasons

- > Length of 1,000 mm and above: 3 supports
- > Length of 1,600 mm and above: 4 supports

**topCo CUSTOMISED**  
ALREADY FROM A SINGLE ITEM

The following features can be selected:

- > Length (dim. A)
- > Number of supports

M6 threaded screws with countersunk head

► MB 1.471

DGH-M 2018, HIDE-en, 06/18; Dimensional data not binding. We reserve the right to alter specifications without notice.

Wardrobes/Hallway Furniture