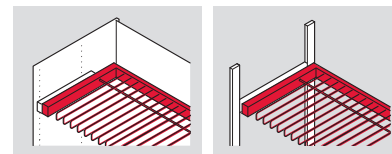
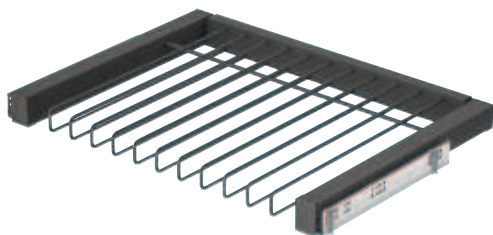


Häfele Dresscode Pull out trouser rack



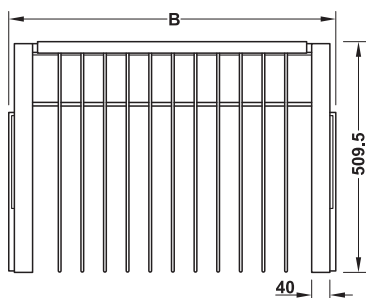
- > Convenient and full access to the trousers from the front
- > Can be freely positioned at intervals of 32 mm
- > Easy installation and disassembly without tools
- > The system can be adapted to customer requirements at any time



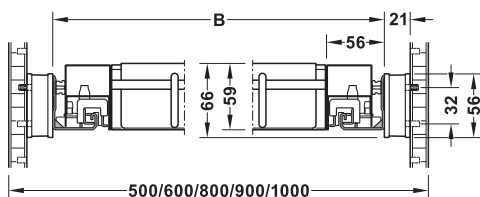
- > Type of pull out: Full extension with self closing and soft closing mechanisms
- > Material: Steel, aluminium, plastic
- > Finish: Powder Coated
- > Internal installation depth: Min. 520 mm
- > Installation height: Max. 900 mm
- > Nom. length: 500 mm
- > Load bearing capacity: Max. 10 kg
- > Installation: Runners: For mounting in provided series drilled holes (wooden cabinet) or on strut (aluminium frame system) without tools

Supplied with

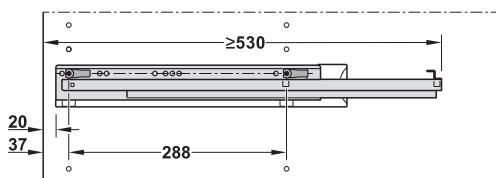
- 1 trouser rack
- 1 pair of runners with Häfele Dresscode connector



Installation dimensions



Drilling pattern



| Version | Width B mm | For cabinet width mm | Umber grey, RAL 7022 | Traffic white, RAL 9016 |
|---------|------------|----------------------|----------------------|-------------------------|
|---------|------------|----------------------|----------------------|-------------------------|

For side panel thickness 16 mm

| | | | | |
|--------------------------|-----|------|------------|------------|
| For 5 pairs of trousers | 426 | 500 | 805.60.302 | 805.60.702 |
| For 7 pairs of trousers | 526 | 600 | 805.60.303 | 805.60.703 |
| For 11 pairs of trousers | 726 | 800 | 805.60.304 | 805.60.704 |
| For 13 pairs of trousers | 826 | 900 | 805.60.305 | 805.60.705 |
| For 15 pairs of trousers | 926 | 1000 | 805.60.306 | 805.60.706 |

For side panel thickness 19 mm

| | | | | |
|--------------------------|-----|------|------------|------------|
| For 5 pairs of trousers | 420 | 500 | 805.60.312 | 805.60.712 |
| For 7 pairs of trousers | 520 | 600 | 805.60.313 | 805.60.713 |
| For 11 pairs of trousers | 720 | 800 | 805.60.314 | 805.60.714 |
| For 13 pairs of trousers | 820 | 900 | 805.60.315 | 805.60.715 |
| For 15 pairs of trousers | 920 | 1000 | 805.60.316 | 805.60.716 |

For side panel thickness 25 mm

| | | | | |
|--------------------------|-----|------|------------|------------|
| For 5 pairs of trousers | 408 | 500 | 805.60.322 | 805.60.722 |
| For 7 pairs of trousers | 508 | 600 | 805.60.323 | 805.60.723 |
| For 11 pairs of trousers | 708 | 800 | 805.60.324 | 805.60.724 |
| For 13 pairs of trousers | 808 | 900 | 805.60.325 | 805.60.725 |
| For 15 pairs of trousers | 908 | 1000 | 805.60.326 | 805.60.726 |

Packing: 1 piece

Order reference

Cabinet width = 2 x side panel thickness + width B + spacer bars (42 mm).

Spacer bars are mandatory in order to compensate for the door offset in the cabinet. Please order separately.

Spacer bar ▶ FF 7.15