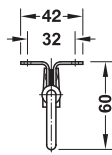


Extending wardrobe rail

→ For screw fixing beneath shelves or cabinet top panels

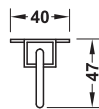
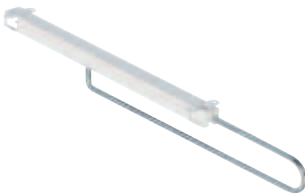
Load bearing capacity 4–8 kg, length 260–410 mm



- > Material: Steel
- > Finish: Nickel plated
- > Version: Extending, with plastic guide rail

Length mm	Hole spacing mm	Load bearing capacity kg	Packing pieces	Cat. No.
260	231	8	1 or 50	805.01.752
310	281	6	1 or 50	805.01.761
360	331	5	1 or 50	805.01.770
410	381	4	1 or 25	805.01.789

Load bearing capacity 10 kg, length 300–450 mm



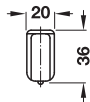
- > Material: Steel
- > Finish: Hoop: Zinc plated, rail: Powder coated
- > Version: Extending

Colour	Length mm	Extension length mm	Cat. No.
White	300	223	805.12.303
	350	275	805.12.358
	400	320	805.12.401
	450	350	805.12.456

Packing: 1 or 10 pieces

7

Load bearing capacity 30–35 kg, length 305–455 mm



- > Material: Rail: Aluminium, cover plate and sliding rings: Plastic
- > Finish: Rail: Silver coloured anodized
- > Colour: Cover plate and sliding rings: White
- > Version: Extending, with sliding rings and cover plate

Length mm	Load bearing capacity kg	Extension length mm	Number of sliding rings	Cat. No.
305	30	165	4	805.04.301
355		215	6	805.04.356
405	35	265	8	805.04.409
455		315	10	805.04.454

Packing: 1 or 10 pieces

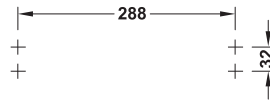
Replacement sliding ring



Material	Cat. No.
Plastic	805.04.990

Packing: 1 or 20 pieces

→ For screw fixing beneath shelves or cabinet top panels



Drilling pattern

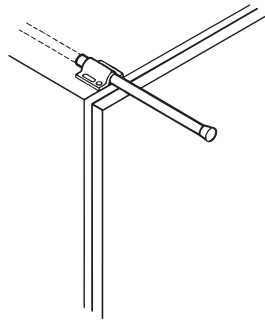
- > Version: Extending
- > Material: Profile: Aluminium, holder: Plastic
- > Colour: Profile: Silver coloured, holder: Black
- > Load bearing capacity: 3 kg
- > Type of pull out: Single extension

Dim. (W x D x H) mm	Cat. No.
40 x 312 x 50	805.04.690

Packing: 1 or 50 pieces

→ For screw fixing to cabinet top panel

Length 225 mm



- > Material: Bracket and rail: Aluminium, cover caps: Plastic
- > Colour: Cover caps: Black
- > Version: Extending
- > Tube Ø: 13 mm
- > Screw-on plate 40 x 40 mm

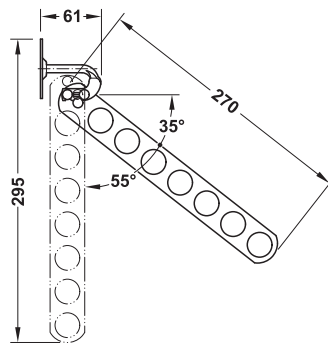
Finish/colour	Cat. No.
Powder coated, white aluminium, RAL 9006	808.61.233

Packing: 1 or 25 pieces

→ For screw fixing to side panel

- > Load bearing capacity: 5 kg
- > Material: Steel
- > Version: Folding
- > Screw-on plate Ø 60 mm

Length 295 mm



Finish	Cat. No.
Polished chrome plated	805.43.200

Packing: 1 piece

DGH-M-INT 2020, HDE-en, 05/19; Dimensional data not binding. We reserve the right to alter specifications without notice.

