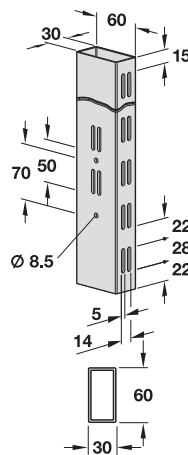




- > Material: Steel
- > Finish: Powder coated
- > Material thickness: 2 mm
- > Interval: 50 mm
- > Apertures: Double slotted on two sides (side slots only suitable for column support rail)

Column 60 x 30 mm Double slotted



Length mm	Number of side slots	Signal white, RAL 9003	White aluminium, RAL 9006	Black
1315	2	772.16.713	770.16.213	772.16.313
2115	3	772.16.721	770.16.221	772.16.321
2515	4	772.16.725	770.16.225	772.16.325
2915	4	772.16.729	770.16.229	772.16.329

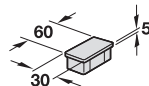
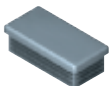
Packing: 1 piece

Shop fitting and shelf system technical safety requirements ▶ FF 12.11

Room Organisation

Accessories for column 60 x 30 mm

→ Cover cap

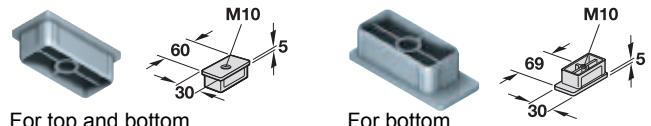


- > Area of application: For covering top end of column
- > Material: Plastic

	Signal white, RAL 9003	White aluminium, RAL 9006	Black
Cover cap	770.16.793	770.16.293	770.16.393

Packing: 1 piece

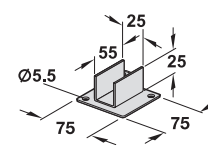
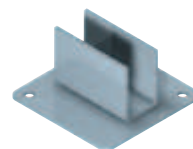
→ Tubular insert



- > Area of application: For inserting in top and bottom of column, for accommodating ceiling clamping screw or adjusting screw
- > Material: Zinc alloy
- > Finish: Bright
- > Thread: M10
- > Version: Tubular insert for bottom with supporting surface for rear panel

	Packing pieces	Cat. No.
For top and bottom	1 or 10	770.16.292
For bottom	1	770.16.294

→ Column foot



- > Material: Steel
- > Finish: Powder coated
- > Material thickness: 2 mm

	Signal white, RAL 9003	White aluminium, RAL 9006	Black
Column foot	770.16.795	770.16.295	770.16.395

Packing: 1 piece

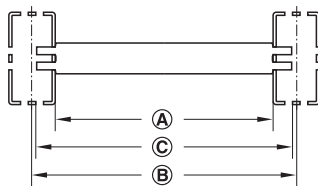
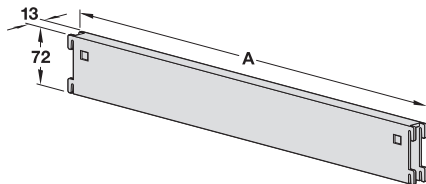
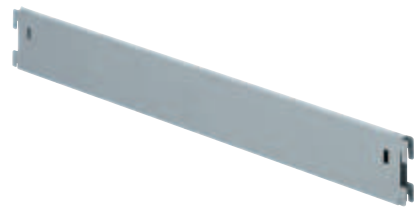


12

DGH-M-INT 2020, HDE-en, 05/19; Dimensional data not binding. We reserve the right to alter specifications without notice.

Accessories for column 60 x 30 mm

→ Column support rail



- (A) Effective length 595/970
- (B) Pitch length 625/1000
- (C) Length over engagement hooks 621/996

- > Material: Steel
- > Finish: Powder coated
- > Version: Plug in, with 2 safety clips

Note

The column support rails on mobile shelves (with castors) must be secured with safety lock screws.

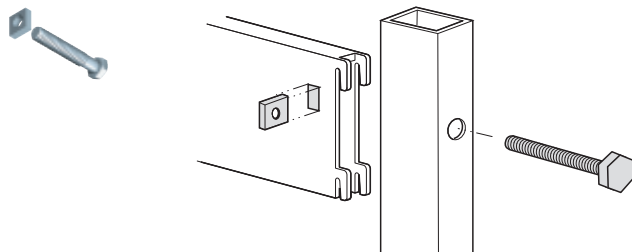
Effective length A mm	Pitch length mm	Signal white, RAL 9003	White aluminium, RAL 9006	Black
595	625	772.16.790	770.16.290	772.16.390
970	1000	772.16.791	770.16.291	772.16.391

Packing: 1 piece

Order reference

- > Column support rails with a pitch length of 1,250 mm are also available for attaching rear panels and wall claddings.
- > Please order safety lock screws separately.

→ Safety lock screw, M8 x 50

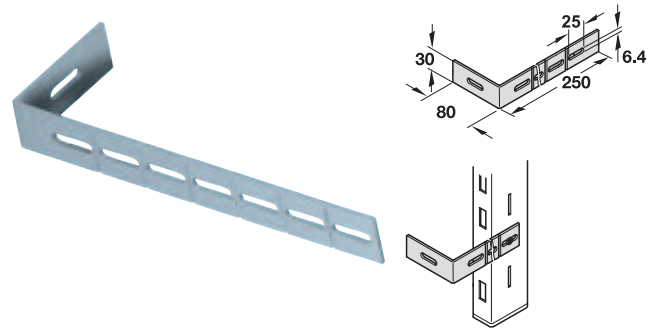


- > Area of application: For securing connections of mobile shelves
- > Material: Steel
- > Finish: Galvanized
- > Dim.: M8 x 50 mm
- > Version: With SW 13 square nut

	Cat. No.
Safety lock screw	770.16.999

Packing: 1 pack

→ Mounting bracket



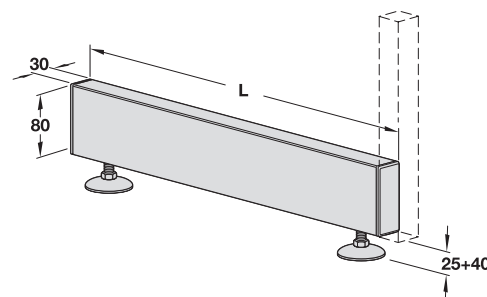
- > Area of application: For wall mounting of 60 x 30 mm columns
- > Material: Steel
- > Version: With predetermined breaking points for shortening length of bracket

	Galvanized
Mounting bracket	770.16.296

Packing: 1 piece

Accessories for columns 30 x 30 mm / 60 x 30 mm

→ Column foot, plug in



- > Area of application: Foot for columns 30 x 30 mm and 60 x 30 mm
- > Material: Column foot: Steel, cover cap and foot plate: Plastic
- > Finish: Column foot: Powder coated
- > Height adjustment facility: +40 mm with M10 adjusting screws

Length L mm	Signal white, RAL 9003	White aluminium, RAL 9006	Black
350	772.16.780	770.16.280	772.16.380
400	772.16.781	770.16.281	772.16.381
500	772.16.782	770.16.282	772.16.382

Packing: 1 piece

Shop fitting and shelf system technical safety requirements

► FF 12.11