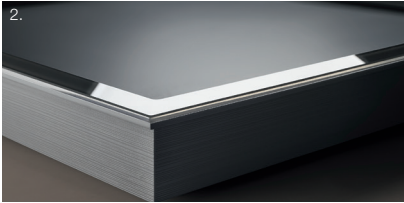


Qanto®  
the way up



## Vertical use of hidden storage space

It's never been easier to access stored items in the kitchen. A simple press of a button and the Qanto® trays rise up. The complete, pre-assembled base unit is plug-and-play and works right out of the box. Qanto® can fit corners, cabinet runs or islands and combines function with design in the kitchen.



## Qanto® base unit

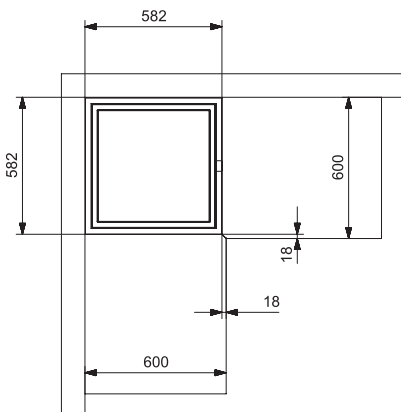
- Optimum use of the storage space
- Easy and ergonomic access to stored items at worktop level
- Intuitive operation at the push of a button
- Tested for safety
- Pre-assembled complete cabinet for a simple installation
- Optional adaptor tray to fit matching worktop material for a perfect aesthetic.

### Options

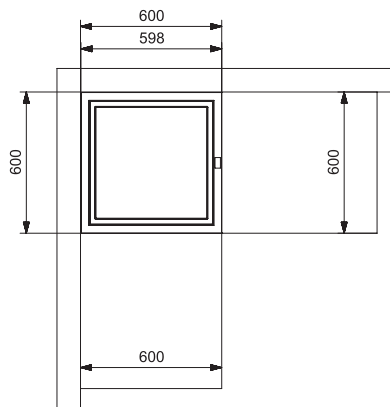
- Corner-planning dimension 650 x 650 mm
- Fitted with 2 or 3 trays
- LED lighting optional
- Plug socket optional
- Colours tray: Stone grey, Dark grey
- Colours cupboard: Anthracite

### Layout examples

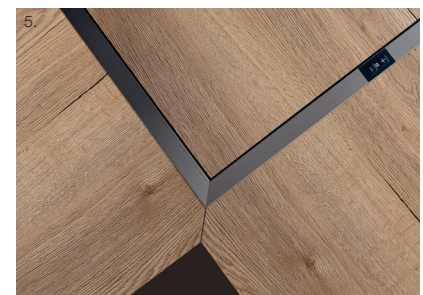
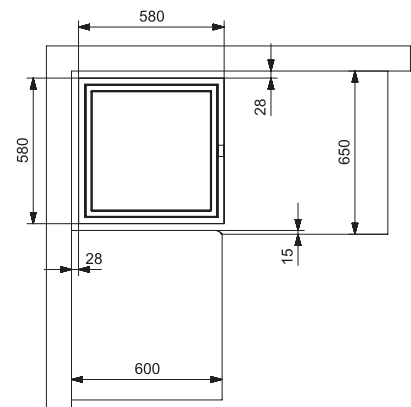
Frame 1 with upper tray  
Frame 9 with adaptor tray  
Mitred worktop



Frame 2 with upper tray  
Worktop to the corner



Frame 4 with upper tray  
Frame 5 with adaptor tray  
Insert in worktop



1. The trays move up and down at the push of a button
2. The crystal-glass effect of the tray rim defines the elegant design
3. Qanto® with 3 trays
4. The base unit is pre-assembled and almost "Plug&Play"
5. Optional adaptor tray to fit matching worktop material

### Part list for base unit

Ref. No.	Description	Version	Frame
5600.XX XXXXX	Qanto® base unit	2 trays	1,2,4
5610.XX XXXXX	Qanto® base unit	3 trays	1,2,4
5620.XX XXXXX	Qanto® base unit with adaptor tray to fit matching worktop material	2 trays	5,9
5630.XX XXXXX	Qanto® base unit with adaptor tray to fit matching worktop material	3 trays	5,9