

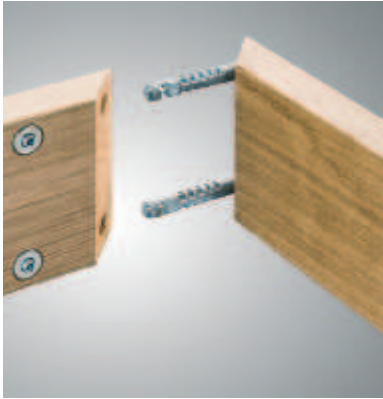
4

Angled dowel with cross dowel

- > Extremely solid connection, for large and heavy elements
- > Quick and easy to process
- > Can be separated by tightening with cross dowel
- > Can be concealed by glue fixing
- > The components can be aligned more accurately to each other due to the 90° angle



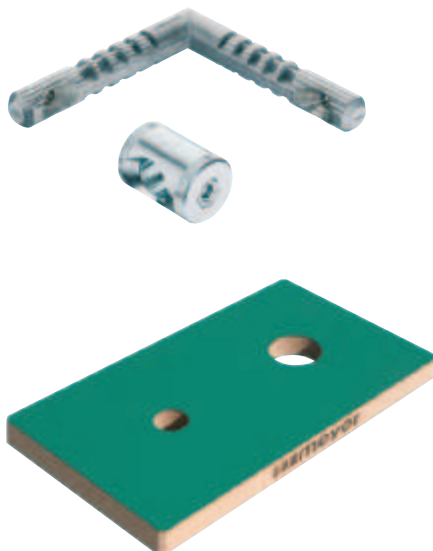
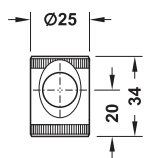
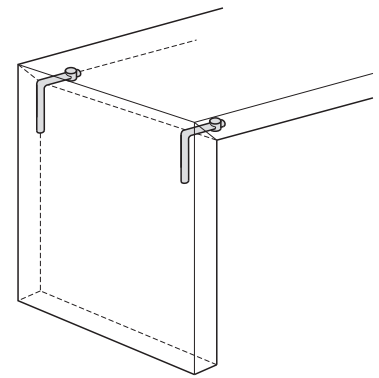
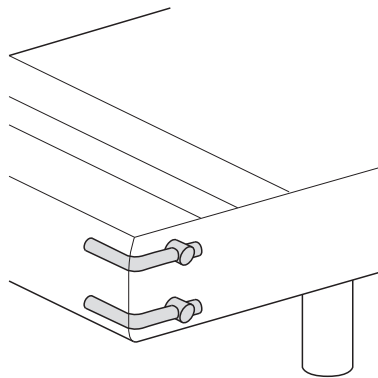
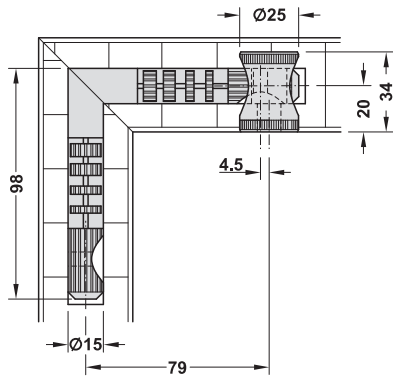
Connector Technology



Installation

- 1 Drill hole in front edge of component.
- 2 Push in angled dowel, position template and drill lateral hole.
- 3 Glue in angled dowel on one side, slide on counterpiece and tighten.

The angled dowel can be screw-fixed with the cross dowel on both sides for completely separable connections or for readjustment of the mitre. The mitre can be additionally bonded, e.g. during installation, by pulling the components together using the cross dowel.



> Area of application: For large mitre-joint connections, e.g. beds, tables, counters and benches, from panel thickness 40 mm, for solid wood and board material

	Material	Packing pieces	Cat. No.
Angled dowel with 1 cross dowel	Zinc alloy/steel galvanized	1 or 10	267.73.010
Cross dowel	Steel galvanized	1 or 10	267.73.915
Drilling template	MDF	1	267.73.090

DGH-M 2021, HDE-en, 11/20; Dimensional data not binding. We reserve the right to alter specifications without notice.