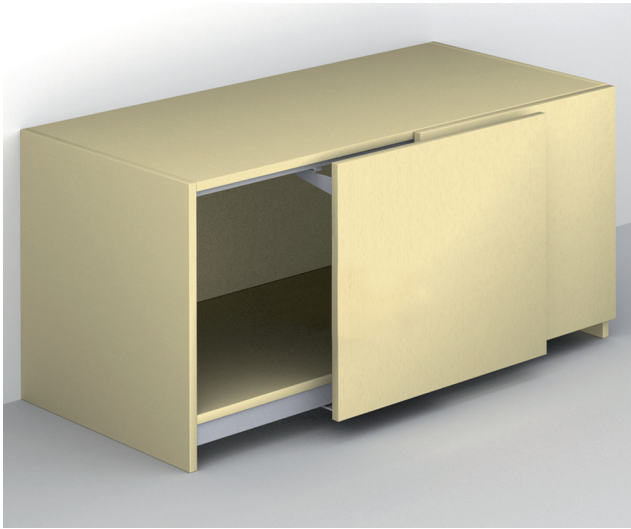


## Finetta F-Flush52 20B

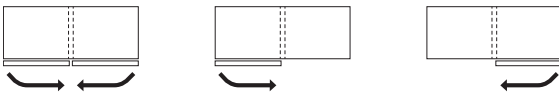


- > Door height: ≤1,200 mm
- > Door width: 600 to 1,500 mm
- > Door thickness: 18–30 mm (including handle: 40 mm)
- > Door weight: Min. 7 kg (recommended)
- > Door offset: 24.5 mm
- > Installation depth: Fitting without door: 185 mm
- > Material thickness: Min. 18 mm
- > Running gear: Bottom running
- > Adjustment facility: Vertical ±4.5 mm, horizontal ±3 mm, via hexagon bolt
- > Distance from handle to door edge ≥10 mm
- > Door overlap on cabinet side panel max. 48 mm

Base unit / sideboard

### Note

The dimensions specified in the order table and in the grey box must be adhered to for standard sets.



### → Standard set

	Supplied with	For cabinet width mm	Internal cabinet width mm	For door width mm	Cat. No.
For 2 doors	1 running track with 2 bottom running gears 1 guide track, top Fixing material	1200	1162	596	406.11.201
		1400	1362	696	406.11.202
		1600	1562	796	406.11.203
		1800	1762	896	406.11.204
		2000	1962	996	406.11.205
		2200	2162	1096	406.11.206
		2400	2362	1196	406.11.207
		2600	2562	1296	406.11.208
		2800	2762	1396	406.11.209
		3000	2962	1496	406.11.210

Packing: 1 set

### → Set, pre-assembled – Service+

#### Order reference

When ordering fixed sizes, please specify additionally to catalogue number:

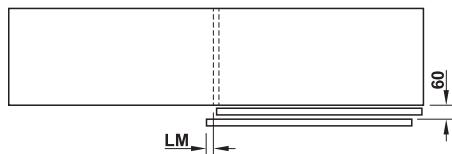
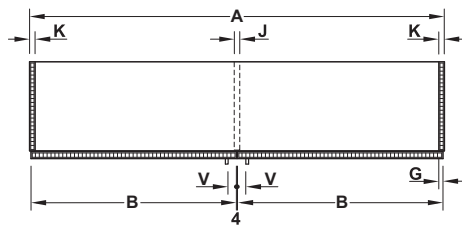
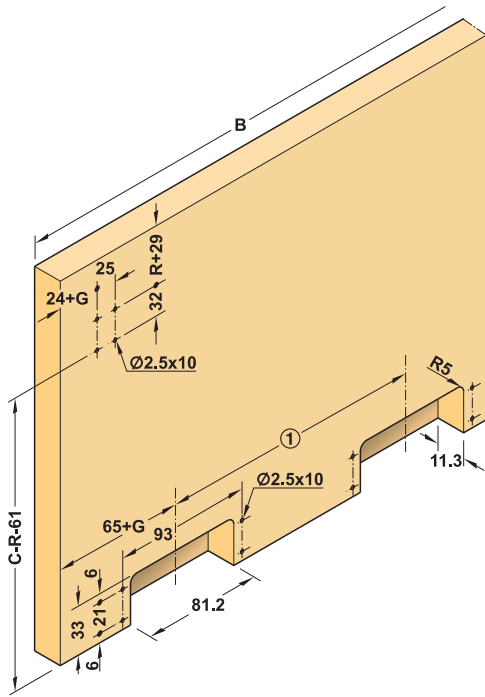
A Cabinet width	IH Internal cabinet height	R Door overlap on cabinet top panel
B Door width	J Centre panel thickness	S Door overlap on cabinet base panel
C Door height	K Side panel thickness	T Door thickness
E Cabinet top panel thickness	LM Door offset	TG Door thickness including handle max. 40 mm
G Door overlap on cabinet side panel (max. 48 mm)	N Cabinet base panel thickness	V Distance from handle to outer edge
	Q Total height	

	Supplied with	Cat. No.
For 2 doors	1 running track with 2 bottom running gears 1 guide track, top Fixing material	406.11.219

Packing: 1 set

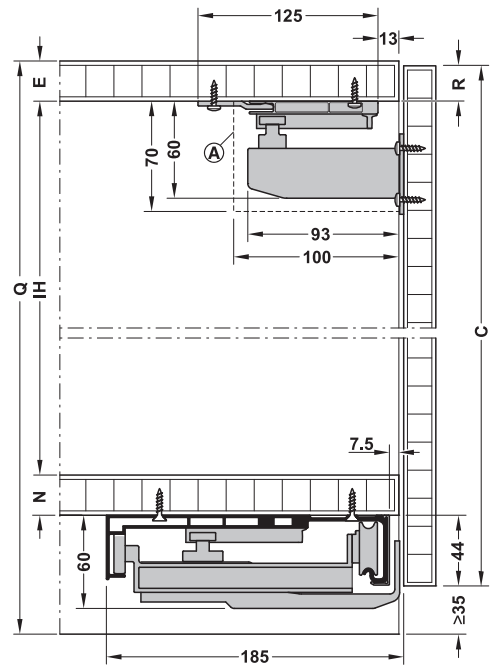


## Drilling pattern for door



Door offset base unit/sideboard  $LM = 17 \text{ mm} + G - (J/2)$

## Installation dimensions



- A Cabinet width
- B Door width
- C Door height
- E Cabinet top panel thickness
- G Door overlap on cabinet side panel (max. 48 mm)
- J Centre panel thickness
- K Cabinet side panel thickness
- IH Internal cabinet height
- N Cabinet base panel thickness
- R Door overlap on cabinet top panel
- Q Total height
- Ⓐ Centre panel notch for continuous track
- V Distance from handle to outer edge min. 10 mm

Cabinet width (mm)	① in mm
1200	194.5
1400	244.5
1600	294.5
1800	344.5
2000	394.5
2200	444.5
2400	494.5
2600	544.5
2800	594.5
3000	644.5