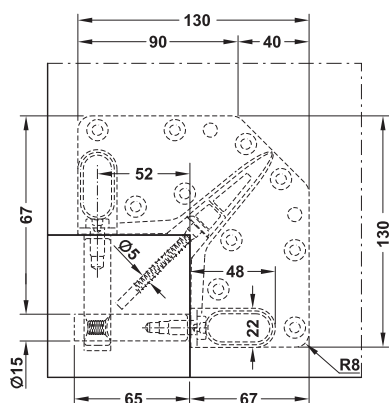
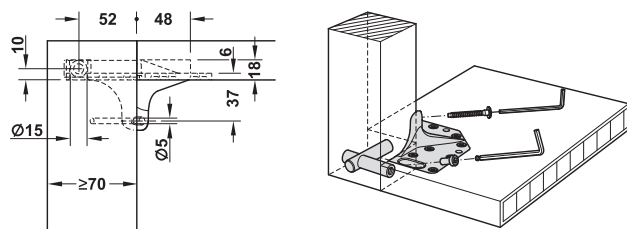


### → Flush with table top

For solid table legs



- > Material: Zinc alloy
- > Finish: Bright
- > Installation: For screw fixing and recess mounting on leg

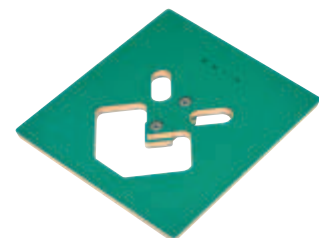
#### Supplied with

- 4 pairs of fixing bolts
- 4 sets of clamping bolts
- 8 hex socket head screws M8 x 30
- 4 connecting screws with nuts, M6
- 1 set of installation instructions

Area of application	Cat. No.
For table legs 70 x 70 to 120 x 120 mm	641.06.941

Packing: 1 set

### Routing template for fixing table legs



	Cat. No.
Routing template	641.06.991

Packing: 1 piece

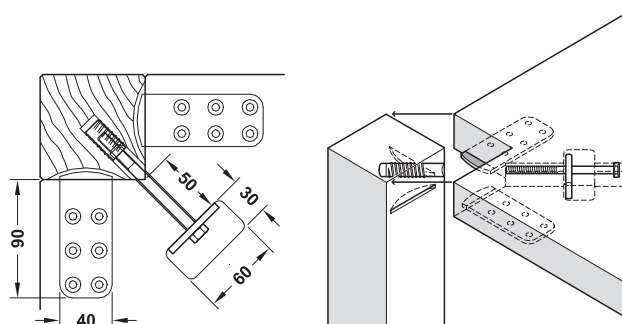
#### Order reference

A jig guide Ø 24 mm and a router bit Ø 16 mm are also required for routing the recess. (Cat. No. 002.15.175)

HM biscuit jointer ► Tools product group 6

### → Flush with table top

For small and lightweight tables



- > Material: Steel
- > Finish: Zinc plated

#### Supplied with

- 8 mounting plates
- 4 sleeves M8 x 30 mm
- 4 perforated plates
- 4 screws M8 x 100 mm

Area of application	Cat. No.
For table legs 70 x 70 to 120 x 120 mm	641.06.945

Packing: 1 set