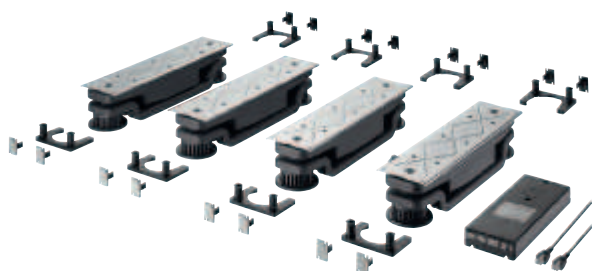


Cabinet lift



- > Area of application: For raising and lowering furniture
- > Load bearing capacity: Approx. 130 kg per lift unit
- > Lift: 100 mm
- > Travel speed: 14 mm/second
- > Height adjustment: Max. 15 mm
- > Material: Housing: Plastic, spindle and support: Steel
- > Installation: For screw fixing to base panel and cabinet

Recommended planning dimensions

	Single-line kitchen	Kitchen island	Max. weight load
4-piece set	Up to 2 m	Approx. 1.20 x 1 m	525 kg
6-piece set	Up to 3 m	Approx. 2.20 x 1.20 m	900 kg
8-piece set	Up to 4 m	Approx. 3.50 x 1.20 m	1050 kg

The distance between cabinet lifts should not exceed 600 mm.

→ Accessories

DPT Operating unit



White



Black

- > Diameter: 72 mm
- > Height: 26 mm
- > Cut-out: Ø 66 mm
- > Functionality: Up and down via arrow keys, programming of up to 3 heights
- > Length: 1,600 mm

Colour	Cat. No.
White	642.71.271
Black	642.71.270

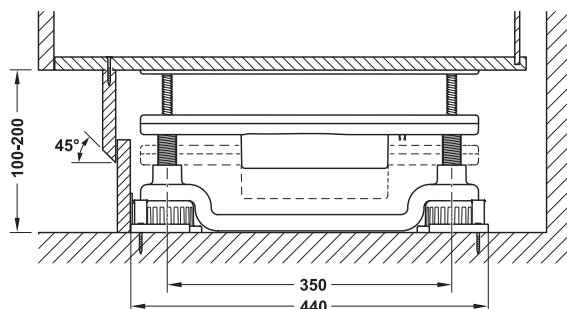
Packing: 1 piece

Extension lead for operating units

Length mm	Cat. No.
2500	642.71.246

Packing: 1 piece

- > Easy cabinet construction
- > Ideal for retrofitting in existing kitchens
- > Compact installation height of only 100 mm



Note

Not suitable for permanent use:
1 minute continuous operation must be followed by a 9 minute pause.

Supplied with

- 4-pc/6-pc/8-pc set:
- 4/6/8 lift units
- 1/2/2 power supply units
- 1/2/2 mains lead length 1,000 mm
- 4/6/8 lead length 1,000 mm (between cabinet lift and power supply unit)
- 0/1/1 interconnecting lead length 2,000 mm (between power supply unit and power supply unit)
- 16/24/32 plinth clips
- 8/12/16 floor mounts

	Cat. No.
4-pc set (4 lift units)	642.71.051
6-pc set (6 lift units)	642.71.052
8-pc set (8 lift units)	642.71.053

Packing: 1 set

Order reference

Please order operating unit separately.

DPH Operating unit



White



Black

- > Diameter: 35 mm
- > Height: 3 mm
- > Functionality: Up and down via arrow keys
- > Length: 1,600 mm

Colour	Cat. No.
White	642.71.261
Black	642.71.260

Packing: 1 piece

Lead

- > Area of application: Between cabinet lift and power supply unit (optional, where standard lead of 1,000 mm is not sufficient)

Length mm	Cat. No.
2500	642.71.242

Packing: 1 piece