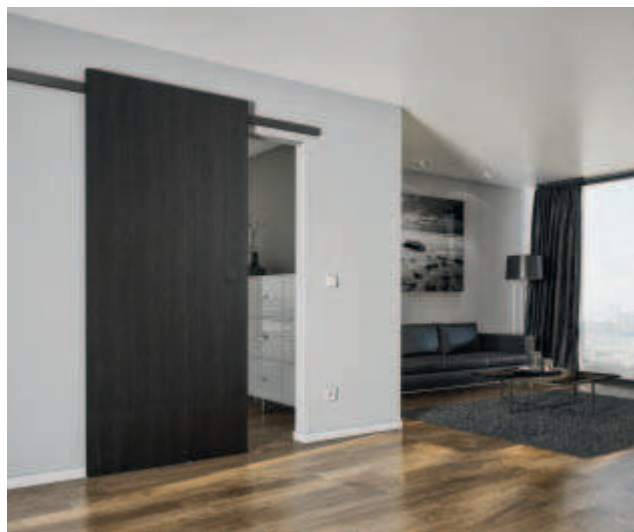


## Häfele D-Line41 50X and 80X Sliding door fitting



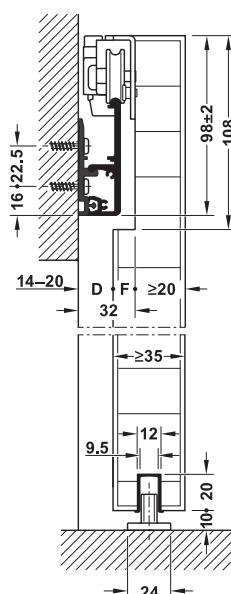
### Soft and self closing mechanism

- > Low opening force – easy and convenient operation
- > Tested with increased closing speed up to 0.6 m/s
- > Can be replaced at any time



- > Area of application: For 1-leaf and 2-leaf sliding doors
- > Version: Invisible running equipment integrated in door
- > Door weight: 50X ≤ 50 kg, 80X ≤ 80 kg
- > Adjustment facility: Height ± 2 mm
- > Installation: Recessed, wall mounting with wall distance 14–20 mm

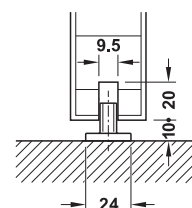
### Wall mounting



Wall distance D  
Routing depth F

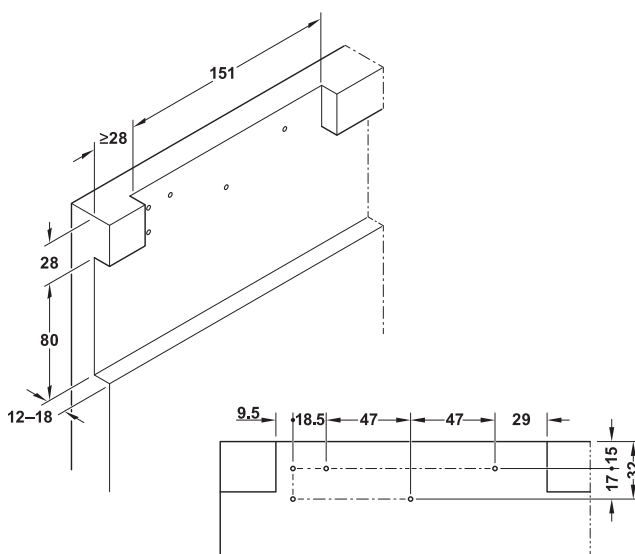
D	F
20	12
18	14
16	16
14	18

Clear threshold floor guide,  
with guide track



Clear threshold floor guide,  
without guide track

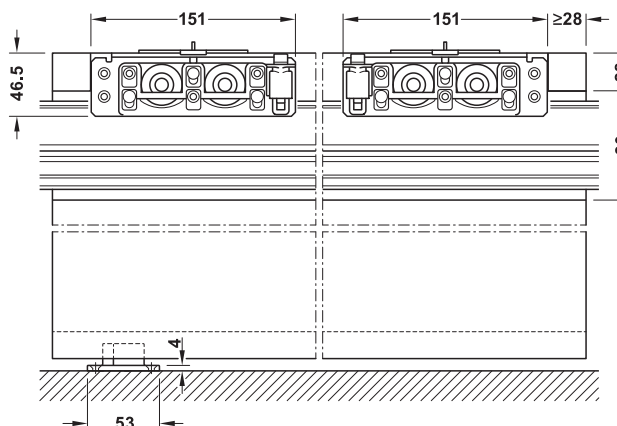
### Cut-out dimensions



### Note

Predefined screw positions simplify the installation. We recommend pilot drilling the drilling pattern when recessing the cut-out.

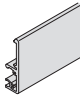
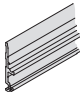
### Section running gear and floor guide



## → Set without running track for 1 door

Version	Model	Door weight kg	Door width mm	Supplied with	Cat. No.
With soft and self closing mechanism on both sides	50X	≤50	≥600	2 running gears	940.42.068
	80X	≤80		2 soft and self closing mechanisms with integrated stopper 2 cover caps for door, silver coloured 2 cover caps for door, black 2 end caps for track, silver coloured 2 end caps for track, black 1 clear threshold floor guide 12 fixing clips for running track/panel	940.42.069

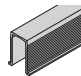
## → Tracks

		Material	Length mm	Black anodized	Silver coloured anodized
Running track and panel		Aluminium	2000	940.42.632	940.42.622
			3000	940.42.633	940.42.623
			6000	940.42.636	940.42.626
Mounting rail, pre-drilled		Aluminium	2000	940.42.732	940.42.722
			3000	940.42.733	940.42.723
			6000	940.42.736	940.42.726

### Note

The soft and self closing mechanism is inserted from above where the track is installed between walls. Suitable mounting material is included in the set.

## → Accessories

		Area of application	Material	Finish/colour	Length mm	Cat. No.
Guide track, bottom, for press fitting		For clear threshold floor guide	Plastic	Black	1000	940.42.050
					1500	940.42.051
					2000	940.42.052

Door handles for sliding doors ► BB 3.122  
BB 9.382

Mortice locks ► BB 4.28  
BB 9.362

Door seals for sliding doors ► BB 9.136

Flush pull handles ► BB 9.371