

## Hook-in connector

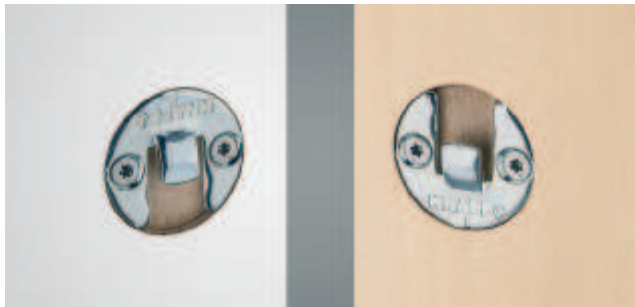
- > Easy to hook in, concealed and can be subjected to load immediately after installation
- > Self-tensioning and separable
- > For doubling panels, for example, without gap



### Note

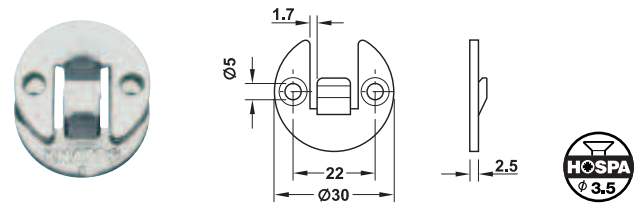
It is recommended to use depth gauge 001.28.129 and HM drill bit  $\varnothing = 30$  mm 001.06.630 for drilling the holes

### → With play



- > Area of application: For use with stairs, cladding, panelling, handrails and doubling elements
- > Installation: For screw fixing with chipboard screw
- > Drill hole  $\varnothing$ : 30 mm

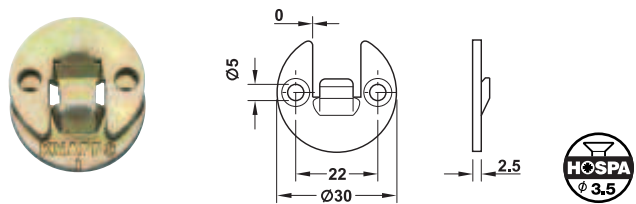
- > Drilling depth: 3 mm
- > With play for compensating dimension and expansion deviations



| Material | Finish/colour   | Cat. No.   |
|----------|-----------------|------------|
| Steel    | Blue galvanized | 262.62.501 |

Packing: 50 pairs

### → Without play



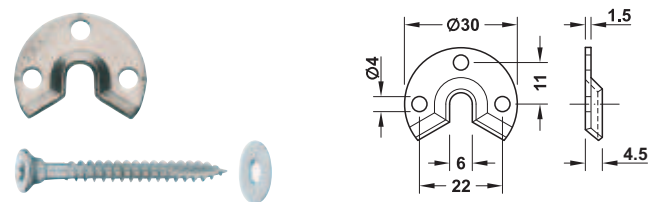
| Material | Finish/colour     | Cat. No.   |
|----------|-------------------|------------|
| Steel    | Yellow galvanized | 262.62.500 |

Packing: 50 pairs

### → For wall mounting



- > Drilling depth: 7 mm
- > Fixing material supplied



| Material        | Cat. No.   |
|-----------------|------------|
| Stainless steel | 262.62.520 |

Packing: 50 sets

### → Centre punch for hook-in connector



Centre punch for hook-in connector with/without play



Centre punch for hook-in connector for wall mounting

|  | Cat. No.   |
|--|------------|
| Centre punch for hook-in connector with/without play | 262.62.990 |
| Centre punch for hook-in connector for wall mounting | 262.62.991 |

Packing: 1 piece

