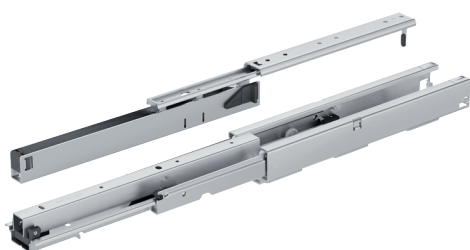
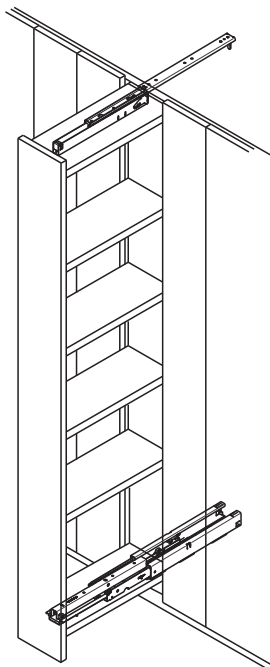


Pull out cabinet runners, full extension

Load bearing capacity up to 75 kg,
with integrated soft and self closing mechanism



Top and bottom runners

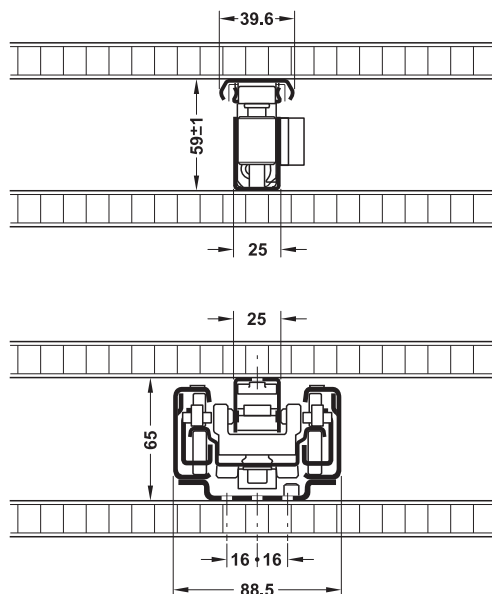


- > Version: With guidance at top for absolute side stability, extremely quiet, with integrated progressive drive
- > Bearing: Top runner: Roller/ball bearings, bottom runner: Friction bearing mounted plastic rollers
- > Material: Runners: Steel, stops: Plastic
- > Finish/colour: Runners: Powder coated, white
- > Dim.: Recommended cabinet height max. 1.5 m, cabinet width max. 400 mm (with appropriately stable structure)
- > Installation: Quick and easy with slide-on system

Note

- > Do not lubricate the tracks of this runner
- > Secure cabinet with securing brackets to prevent toppling

Installation



Supplied with

- 1 ball bearing runner with rollers
- 1 top runner with end stop for side stability
- 1 bottom runner
- 1 set of installation instructions

Installation length L mm	Extension length AL mm	Cat. No.
400	385	421.51.741
450	435	421.51.746
500	485	421.51.751
550	535	421.51.756
600	585	421.51.761
650	635	421.51.766
700	685	421.51.771
750	735	421.51.776

Packing: 1 piece