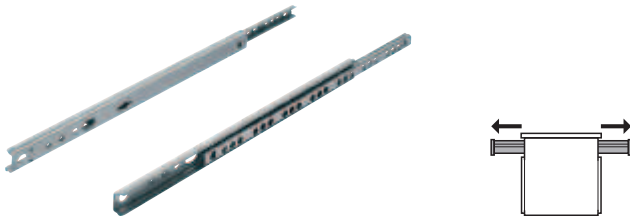


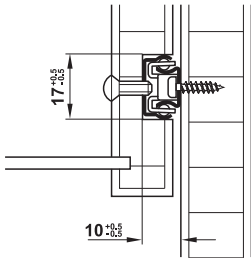
Groove mounted runners

→ Load bearing capacity up to 10 kg
Single extension, two-way travel, runner width 17 mm



- > Material: Steel
- > Finish: Pre-galvanized
- > Dim.: Max. drawer width = internal cabinet width – 20 mm + double groove depth
- > Installation: For screw fixing
- > Material thickness: 1.0 mm

Installation

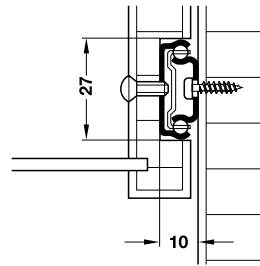


→ Load bearing capacity up to 12 kg
Single extension, two-way travel, runner width 27 mm



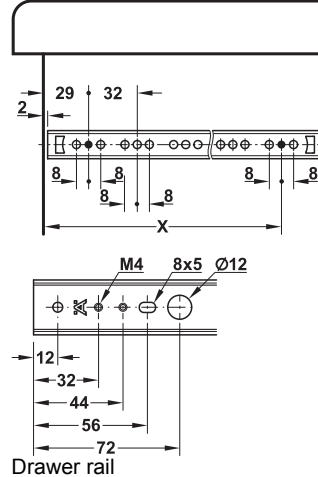
- > Material: Steel
- > Finish: Galvanized
- > Dim.: Max. drawer width = internal cabinet width – 20 mm + double groove depth
- > Installation: Groove mounted on drawer
- > Material thickness: 1.2 mm

Installation



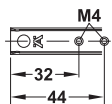
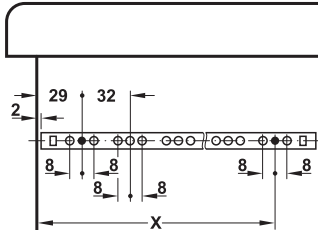
Secure guide rail in drawer groove using an M4 threaded screw.

Drilling pattern



Drawer rail

Drilling pattern



Drawer rail

Cabinet runner length mm	Drawer rail length mm	Ball cage length mm	Dim. X mm	Cat. No.
182	182	47	157	450.25.405
214	214	72	189	450.25.415
246	246	72	221	450.25.425
278	278	72	253	450.25.435
310	310	96	285	450.25.445
342	342	96	317	450.25.455

Packing: 1 or 50 pairs

Cabinet runner length mm	Drawer rail length mm	Ball cage length mm	Dim. X mm	Cat. No.
246	246	76	192	450.25.520
278	278	102	224	450.25.530
310	310	102	256	450.25.480
342	342	102	288	450.25.540

Packing: 1 or 20 pairs



9

Ball Bearing Runners