

Glass door pivot hinge

External pivot, opening angle 210°



For all-glass constructions

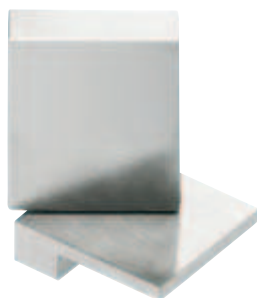
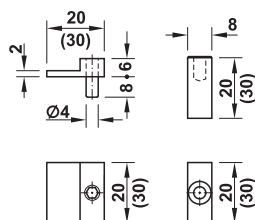


For glass/wood constructions

- > Material: Stainless steel
- > Finish: Satin
- > For glass thickness: 6–12 mm

→ For all-glass constructions

For inset doors



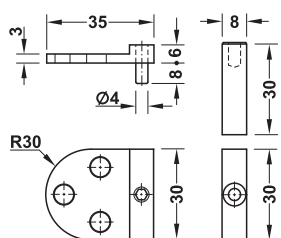
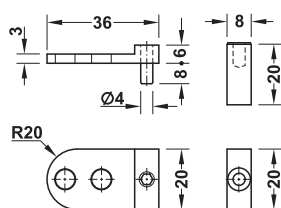
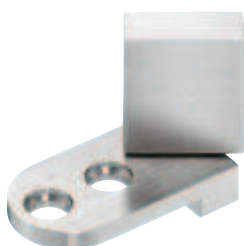
- > Installation: For glue fixing (UV glass adhesive bond)
- > Load bearing capacity: Max. 10 kg per pair

	Cat. No.
Bonding surface on door 20 x 20 mm	361.51.040
Bonding surface on door 30 x 30 mm	361.51.050

Packing: 1 pair

→ For glass/wood constructions

For inset doors



- > Installation: Door: For glue fixing (UV glass adhesive bond), cabinet: For screw fixing with Euro screws
- > Load bearing capacity: Max. 20 kg per pair



	Cat. No.
Bonding surface on door 20 x 20 mm	361.61.040
Bonding surface on door 30 x 30 mm	361.61.050

Packing: 1 pair

Glass gluing technique

► MB 14.14

DGH-M 2017, HDE-en, 10/16; Dimensional data not binding. We reserve the right to alter specifications without notice.