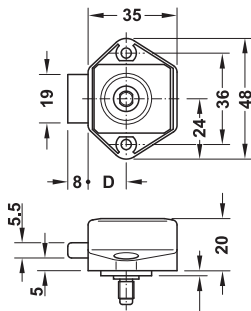
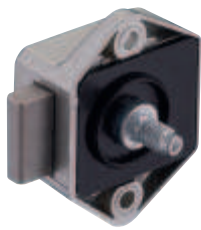


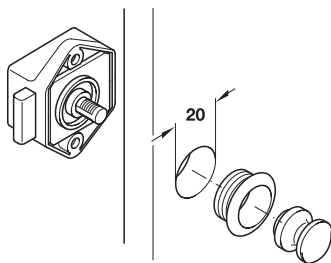
Häfele Push-Lock Mini
Deadbolt rim lock

With push-button locking, backset 15 mm



- > Material: Lock case: Plastic
- > Backset D: 15 mm
- > Locking system: With push-button locking
- > Installation: For screw fixing

Installation

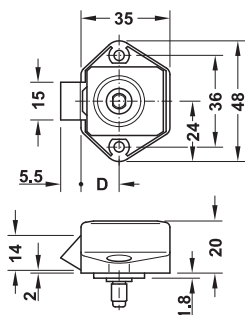


Mounting	Finish	Cat. No.
Left and right	Matt nickel plated	211.61.604
	Brown	211.61.106
	White	211.61.704

Packing: 1 or 100 pieces

Häfele Push-Snap Mini
Latchbolt rim lock

With push-button locking and lockable latchbolt



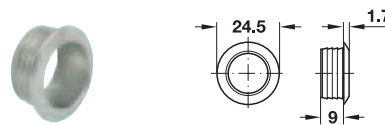
- > Material: Lock case: Plastic
- > Backset D: 15 mm
- > Locking system: With push-button locking
- > Installation: For screw fixing

Mounting	Finish	Cat. No.
Left and right	Matt nickel plated	211.62.601
	Brown	211.62.101
	White	211.62.701

Packing: 1 or 100 pieces

Rosette

→ For panel thickness 16 mm, Push-Lock Mini



- > Material: Plastic
- > For panel thickness: 16 mm

Finish/colour	Cat. No.
Matt nickel plated	229.09.600
Polished brass plated	229.09.806
White	229.08.701
Light grey	229.08.505

Packing: 1 or 100 pieces

Order reference

Other finishes available on request.

Push-button

→ For panel thickness 16 mm, Push-Lock Mini

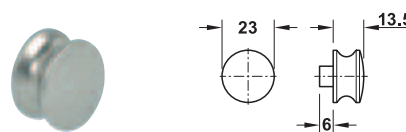


- > Material: Plastic
- > For panel thickness: 16 mm

Finish/colour	Cat. No.
Matt nickel plated	229.07.606
Polished brass plated	229.07.802
White	229.06.707
Brown	229.06.109

Packing: 1 or 100 pieces

→ For panel thickness 19 mm, Push-Lock Midi



- > Material: Plastic
- > For panel thickness: 19 mm

Finish/colour	Cat. No.
Matt nickel plated	229.05.620

Packing: 1 or 100 pieces

Order reference

For suitable rosettes see Push-Lock espagnolette locks.

