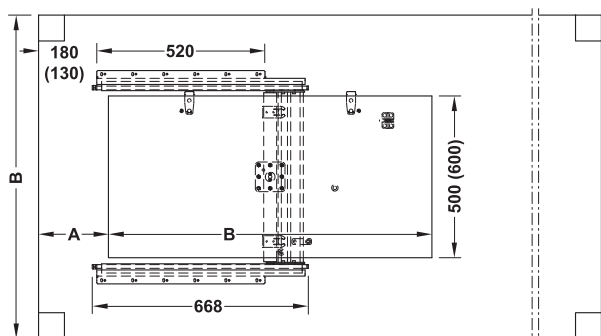
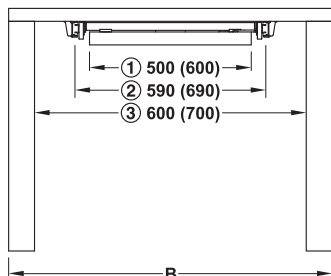
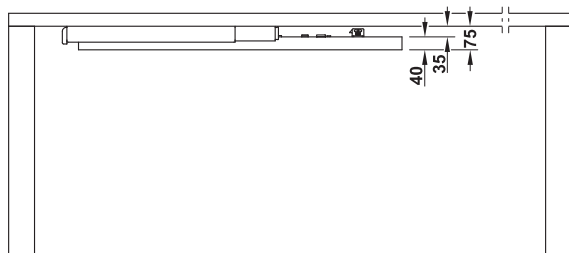


Table pull out fitting

- > Easy installation – recesses not required
- > Can easily be retrofitted to existing tables

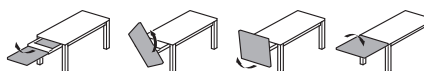


Dim. B = table width



- ① Additional table top
 - ② Movable part
 - ③ Internal width
- Dim. B = table width

Functionality



One folding extension leaf

- > Area of application: For extending tables with an additional table top
- > Material: Pull out: Steel, tilt and turn unit: Aluminium
- > Finish: Pull out: Galvanized, tilt and turn unit: Anodized
- > Installation: For screw fixing beneath table top
- > Dim.: Additional table top width 500 or 600 mm
- > Max. table width: 1,200 mm (with standard table height of 750 mm)

Technical data

Table width B mm	Dim. A (max.) mm
850	365
900	315
950	265
1,000	215
1,100	165

Supplied with

- 1 Pair of telescopic extension with tilt and turn unit
- 1 Catch, stainless steel
- 1 Mounting template with scale of 1:1

	Cat. No.
For additional table top 500 mm	641.07.920
For additional table top 600 mm	641.07.921

Packing: 1 set

Note

The thickness of the additional table top must correspond to the table top thickness.