

Pull out cabinet runners, full extension

Load bearing capacity up to 200 kg,
with soft and self closing mechanism (optional)



Pull Out Cabinet Runners



Top and bottom runners

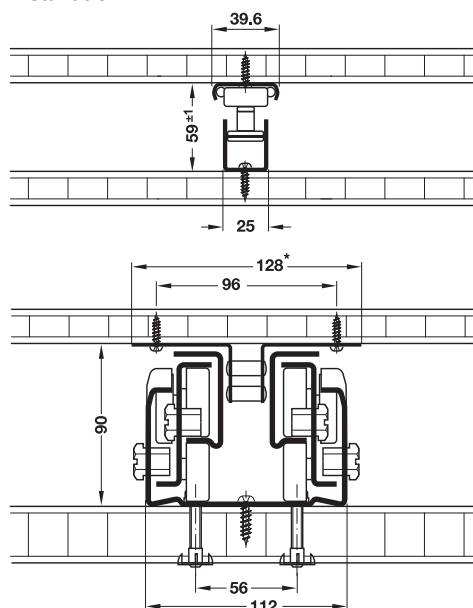


- > Version: With guidance at top for absolute side stability, extremely quiet running even under heavy load, with integrated progressive drive, no lowering when extended
- > Adjustment facility: Max. height and side adjustment ± 4 mm
- > Material: Runners: Steel, stops: Plastic
- > Finish/colour: Runners: Powder coated white
- > Dim.: Max. 2.5 m cabinet height and max. 600 mm cabinet width (with appropriately stable structure)
- > Installation: For screw fixing to cabinet, quick and easy with slide-on system

Note

- > **Do not** lubricate the tracks of this runner
- > Secure cabinet with securing brackets to prevent toppling
- > Installation width min. 158 mm when using the soft and self closing mechanism (without soft and self closing mechanism min. 124 mm)

Installation



Supplied with

- 1 ball bearing runner with rollers
- 1 top runner with end stop for side stability
- 1 bottom runner
- 1 set of installation instructions

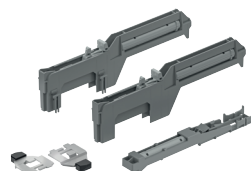
Installation length L mm	Extension length AL mm	Cat. No.
400	384	421.50.742
450	434	421.50.747
500	484	421.50.752
550	534	421.50.757
600	584	421.50.762
650	634	421.50.767
700	684	421.50.772
750	734	421.50.777
800	784	421.50.782
850	834	421.50.787
900	884	421.50.792
950	934	421.50.797
1000	984	421.50.802
1100	1084	421.50.812

Packing: 1 piece

Order reference

Please order soft and self closing mechanism for soft closing action separately.

→ Soft and self closing mechanism



Supplied with

- 1 damper for top runner
- 2 dampers/followers for bottom runner
- 1 set of installation instructions

	Cat. No.
Soft and self closing mechanism	421.50.002

Packing: 1 piece

DGH-M-INT 2020, HDE-en, 05/19; Dimensional data not binding. We reserve the right to alter specifications without notice.