

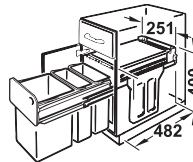
**Three compartment waste bin**

→ Hailo Terzett, 1 x 15 and 2 x 7 litres / 3 x 10 litres



7  
7  
15  
  
10  
10  
10

- > For cabinet width: Min. 300 mm
- > Type of pull out: Full extension (manual extension)
- > Installation: For screw fixing to base panel
- > Dim. (W x D x H): 251 x 482 x 400 mm



Capacity I	Material	Model	Cat. No.
<b>Three compartment waste bin</b>			
1 x 15 and 2 x 7	Bin holder: Steel, powder coated, grey, lid and bin: Plastic, graphite grey	3666-19	502.70.253
3 x 10	Bin holder: Steel, powder coated, grey, lid and bin: Plastic, graphite grey	3666-13	502.70.255

<b>Replacement bin</b>		
7	Plastic, graphite grey 226 x 115 x 350 mm (L x W x H)	502.70.095
10	Plastic, graphite grey 226 x 154 x 350 mm (L x W x H)	502.70.991
15	Plastic, graphite grey 230 x 220 x 350 mm (L x W x H)	502.51.915
<b>Replacement lid for 15 I bin</b>		
–	Plastic, graphite grey	502.72.975

Packing: 1 piece



**6**

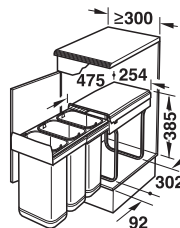
→ 3 x 10 litres

Waste/Recycling Bins



10  
10  
10

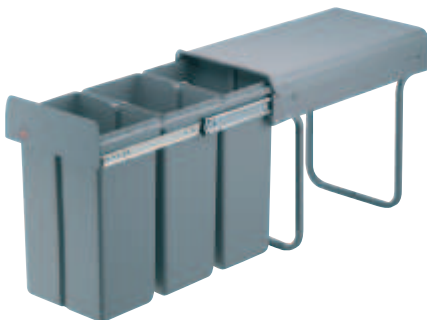
- > For cabinet width: Min. 300 mm
- > Type of pull out: Full extension (manual extension)
- > Installation: For screw fixing to base panel



Capacity I	Material	Cat. No.
<b>Three compartment waste bin</b>		
3 x 10	Bins: Stainless steel, bin holder and lid: Plastic, anthracite	502.67.033
<b>Replacement bin</b>		
10	Stainless steel 225 x 150 x 350 mm (L x W x H)	502.67.902

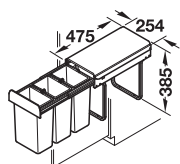
Packing: 1 piece

→ 3 x 10 litres



10  
10  
10

- > For cabinet width: Min. 300 mm
- > Type of pull out: Full extension (manual extension)
- > Installation: For screw fixing to base panel



Capacity I	Material	Cat. No.
<b>Three compartment waste bin</b>		
3 x 10	Bin holder: Steel, bins and lid: Plastic, grey	502.67.733
<b>Replacement bin</b>		
10	Plastic, grey 225 x 150 x 350 mm (L x W x H)	502.67.990

Packing: 1 piece

DGH-M-INT 2020, HDE-en, 05/19; Dimensional data not binding. We reserve the right to alter specifications without notice.