

Glass door hinge

Opening angle 180°



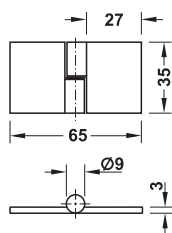
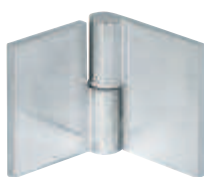
For all-glass or glass/
wood constructions



For all-glass constructions

→ For all-glass constructions

For inset doors



> Installation: For glue fixing (UV glass adhesive bond)

Installation

Recommended door ratio:
Height to width 3:2 must not be exceeded!

- > Area of application: Also suitable for mirror doors
- > Material: Aluminium
- > Finish: Polished
- > For glass thickness: Max. 12 mm
- > Load bearing capacity: 5 kg/hinge

Supplied with

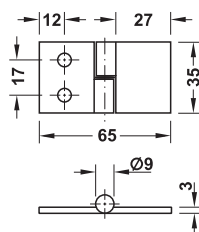
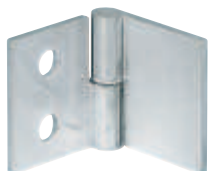
Installation instructions

| Mounting | Cat. No. |
|----------|------------|
| Left | 361.52.901 |
| Right | 361.52.900 |

Packing: 2 pieces

→ For glass/wood constructions

For inset doors



- > Area of application: Also suitable for mirror doors
- > Material: Aluminium
- > Finish: Polished
- > For glass thickness: Max. 12 mm
- > Load bearing capacity: 5 kg/hinge
- > Installation: For glue fixing (UV glass adhesive bond), for screw fixing to side panel

Supplied with

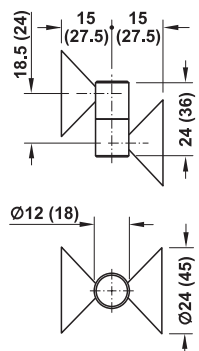
Installation instructions

| Mounting | Cat. No. |
|----------|------------|
| Left | 361.62.901 |
| Right | 361.62.900 |

Packing: 2 pieces

→ For all-glass constructions

For overlay doors



- > Material: Stainless steel
- > Finish: Satin

Installation

Side overlay min. 28 mm with panel 24
Side overlay min. 52 mm with panel 45

Supplied with

Installation instructions

| Diameter mm | For glass thickness mm | Load bearing capacity kg | Cat. No. |
|-------------------------|------------------------|--------------------------|------------|
| Panel 24 mm, axle 12 mm | 6–10 | 5 kg/hinge | 361.53.001 |
| Panel 45 mm, axle 18 mm | 6–15 | 10 kg/hinge | 361.53.002 |

Packing: 1 piece

