

### Adjusting foot for decking



With continuously height adjustable support feet, 3.5–5 decking support pads are required for one m<sup>2</sup>  
 Plate Ø: 190 mm  
 Hard plastic polypropylene

Height adjustment facility	Load bearing capacity kg	Packing pieces	Cat. No.
----------------------------	--------------------------	----------------	----------

#### For laying decking boards

25-40 mm	814 per support pad	54	070.05.051
35-70 mm	831 per support pad	36	070.05.052
65-155 mm	839 per support pad	32	070.05.053

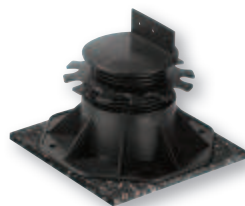
#### For laying BIG-Isostep underlayment

25-40 mm	814 per support pad	42	070.05.054
35-70 mm	831 per support pad	36	070.05.055
65-155 mm	839 per support pad	32	070.05.056

### Isopat rubber granules for patio subconstructions



### Isopat rubber granules for decking support pads



For compensating small uneven surfaces, as wood preservation on the upper side and building protection underneath  
 Breathable, vapour diffusionable, rotproof, non-slip, provides a wide supporting surface

Rubber granules

#### Installation:

With bearing beams that run crossways in direction of water flow, Isopat is attached at intervals at individual points. This ensures that the drainage of water and dirt is not hindered.

**Packing:** 1 pack

Dim. (L x W x H) mm	Contents	Cat. No.
90 x 60 x 8	48 pieces	070.05.102
90 x 60 x 20	30 pieces	070.05.103

For compensating small uneven surfaces, forest floor effect and footstep sound insulation  
 Breathable, vapour diffusionable, rotproof, non-slip, provides a wide supporting surface

Rubber granules

Contents: 10 pieces

#### Order reference:

Decking support foot not supplied.

**Packing:** 1 piece

Dim. (L x W x H) mm	Cat. No.
192 x 192 x 8	070.05.104

**Spacer for visible fixing**

Made from recyclable plastic, ensures the ventilation between decking boards and bearing beams as well as drying off standing water, uniform decking pattern, approx. 15 spacers are required for one m<sup>2</sup>, bolt 7 mm

**Packing:** 100 pieces

Dim. (L x W x H) mm	Cat. No.
88 x 25 x 20	070.05.032

**Spacer for invisible fixing**

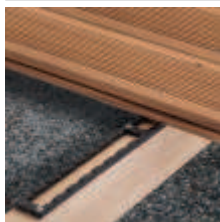
For invisible decking board fitting, for all decking boards with thickness of 20–26 mm and central groove with depth of 4 and 9 mm  
Tightening range: 5.5–11.5 mm, approx. 15 spacers are required for one m<sup>2</sup>

**Supplied with:**

Screws

**Packing:** 30 pieces

	Cat. No.
For wood substructures	070.05.020
For Isostep underlayment	070.07.990

**Spacer bar**

For wood decking construction, as intermediate layer for hard wood panel and substructure

Provides the screw with the necessary room to move, screws snap off less frequently, ribbed design provides good ventilation, reduces the effect of weathering on the hard wood decking to a minimum

**Packing:** 50 pieces

Length mm	Height mm	Cat. No.
700	7	010.96.989

**Terrastart Start/end fixing component**

For concealed decking board fitting, for decking boards with central groove (width  $\geq$  4 mm; depth  $\geq$  9 mm), for use with substructures with aluminium rails and for laying decking boards with spacers for Isostep underlayment

Glass-fibre reinforced polyamide

Colour: Black

**Supplied with:**

Screws for wooden and aluminium rails

**Packing:** 20 pieces

Suitable for	Cat. No.
Aluminium/wooden substructure	070.05.023