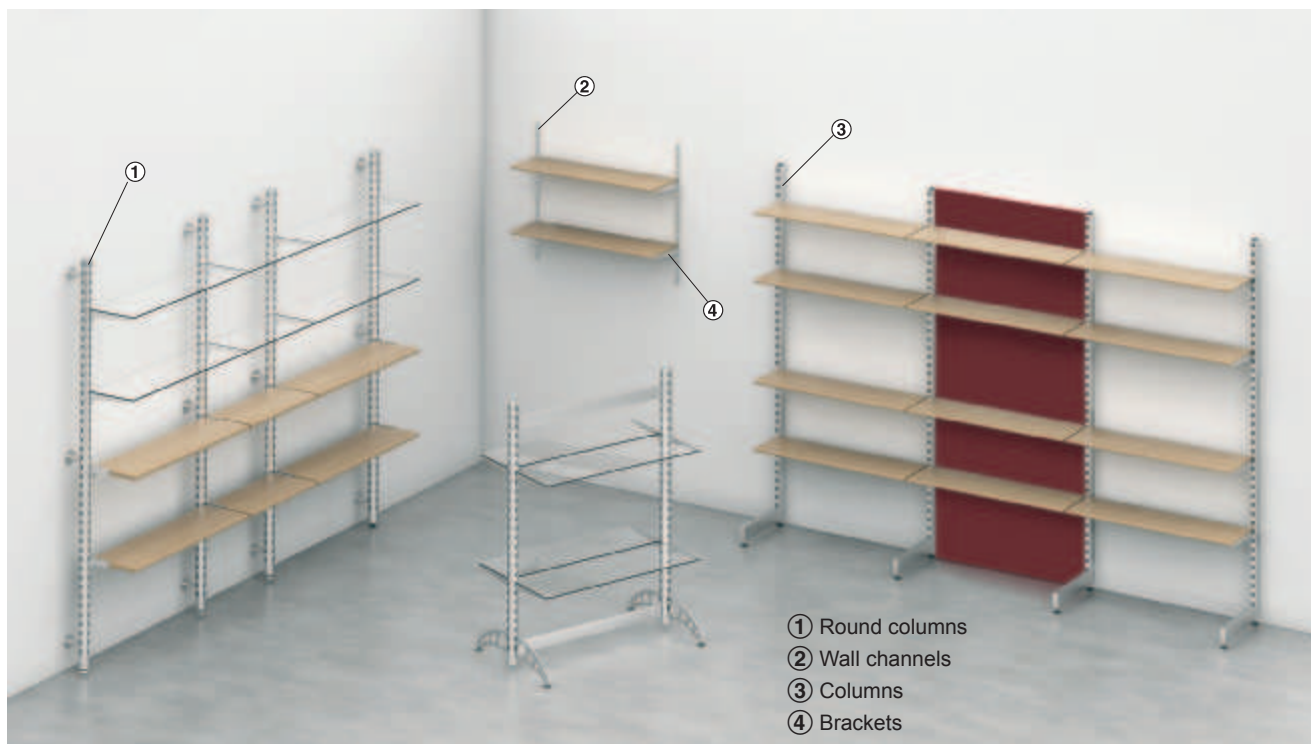


Shop fitting and shelf system

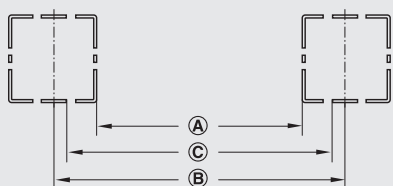


- ① Round columns
- ② Wall channels
- ③ Columns
- ④ Brackets

This shop fitting and shelf system is an extremely flexible and universal system for stores. Different basic elements can be combined with each other, making the best possible use of the available space. The merchandise display rails are easy to install in columns and wall channels, and no tools are required. This system provides you with a wide range of merchandise display rails and therefore individual ways of successfully displaying merchandise.

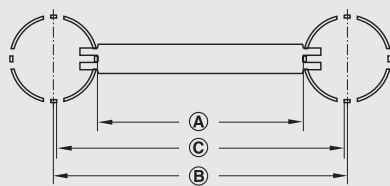
Pitch length, length over engagement hooks and effective length

Standard pitch length, length over engagement hooks and effective length guarantee compatibility between wall channels, columns and available components such as shelf supports or support rails.



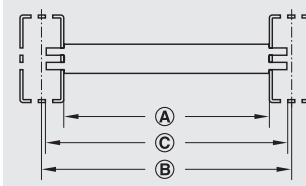
Dim. in mm for column 30 x 30 mm

Ⓐ Internal width/ effective length	595/970
Ⓑ Pitch length	625/1,000
Ⓒ Length over engagement hooks	621/996



Dim. in mm for round column, Ø 60 mm

Ⓐ Internal width/ effective length	595/940
Ⓑ Pitch length	625/1,000
Ⓒ Length over engagement hooks	621/996



Dim. in mm for column 60 x 30 mm

Ⓐ Internal width/ effective length	595/970
Ⓑ Pitch length	625/1,000
Ⓒ Length over engagement hooks	621/996

Technical safety requirements

Shelf systems must comply with the technical safety requirements defined in EN 1727:1998; among other things, this means that shelf systems always must be secured to prevent toppling. The surface must be suitable or appropriately reinforced for erecting a shelf system.

The storage equipment and device guidelines defined in ZH 1/428 of the employer's liability association guidelines must be complied with.

Wall channel	► FF 12.12
Column	► FF 12.13
Brackets and merchandise display rails	► FF 12.25

DGH-M-INT 2020, HDE-en, 05/19; Dimensional data not binding. We reserve the right to alter specifications without notice.