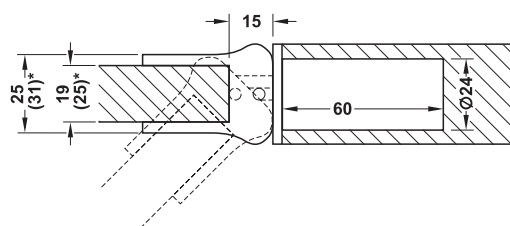


### Double action spring hinge with hold open function

For flush doors, door thickness 19–30mm

- Area of application: For wooden frames, for flush wooden interior doors
- Material: Mounting plate: Steel, bracket: Steel, brass or plastic
- Finish: Mounting plate: Galvanized, bracket: Nickel plated polished, matt or grey
- Version: With 1 or 2 springs (optional), for 19–24 mm or 25–30 mm thick doors
- Opening angle: 100° swing action on both sides; with hold open angle at approx. 90°
- Door height: ≤2,000 mm
- Door width: ≤700 mm
- Mounting: For DIN left and DIN right hand use

#### Installation



\* Dimensions in brackets apply to versions for door thickness 25–30 mm.

If both versions are combined, always mount the version with 2 springs on the top.

If the door leaf is thicker than the internal width of the bracket, the door leaf thickness must be adapted equally on both sides as required.

#### Reference table for maximum door weight

Door height mm	Door width mm				
	300	400	500	600	700
500	9 kg	6 kg	5 kg	4 kg	3 kg
600	11 kg	8 kg	6 kg	5 kg	4 kg
700	12 kg	9 kg	7 kg	6 kg	5 kg
900	16 kg	12 kg	10 kg	8 kg	7 kg
1000	18 kg	13 kg	11 kg	9 kg	7 kg
1100	20 kg	15 kg	12 kg	10 kg	8 kg
1200	22 kg	16 kg	13 kg	11 kg	9 kg
1300	22 kg	17 kg	14 kg	12 kg	10 kg
1400	22 kg	19 kg	15 kg	12 kg	11 kg
1500	22 kg	20 kg	16 kg	13 kg	11 kg
1600	22 kg	22 kg	17 kg	14 kg	12 kg
1800	22 kg	22 kg	19 kg	16 kg	14 kg
2000	22 kg	22 kg	21 kg	18 kg	15 kg

If the version with two springs is mounted on the top, the maximum door weights increase 1.8-fold, but only up to a maximum weight of 26 kg.

Example:

[Door width 400 mm, door height 1,500 mm] door max. 20 kg, when using the version with 2 springs;

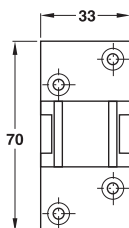
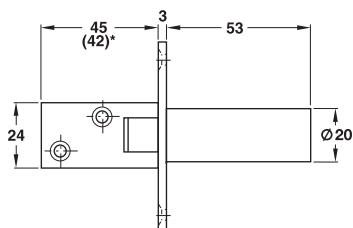
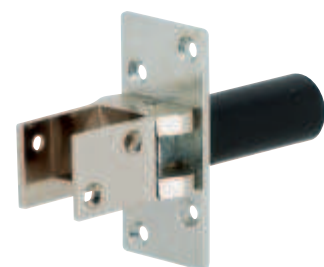
$1.8 \times 20 \text{ kg} = 36 \text{ kg} = 26 \text{ kg}$  (maximum weight)



6

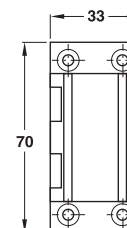
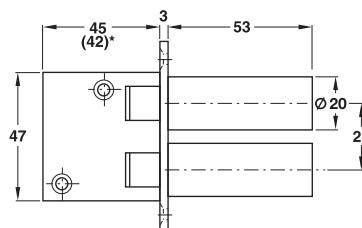
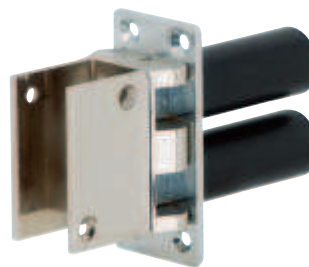
Spring and Double Action Spring Hinges

#### → With 1 spring



For door thickness mm	Material	Finish/colour	Cat. No.
19–24	Steel	Nickel plated polished	927.00.071
	Brass	Matt	927.00.081
	Plastic	Grey	927.00.035
25–30	Steel	Nickel plated polished	927.00.271
	Brass	Matt	927.00.281
	Plastic	Grey	927.00.235

#### → With 2 springs



For door thickness mm	Material	Finish/colour	Cat. No.
19–24	Steel	Nickel plated polished	927.00.171
	Brass	Matt	927.00.181
	Plastic	Grey	927.00.135
25–30	Steel	Nickel plated polished	927.00.371
	Brass	Matt	927.00.381
	Plastic	Grey	927.00.335

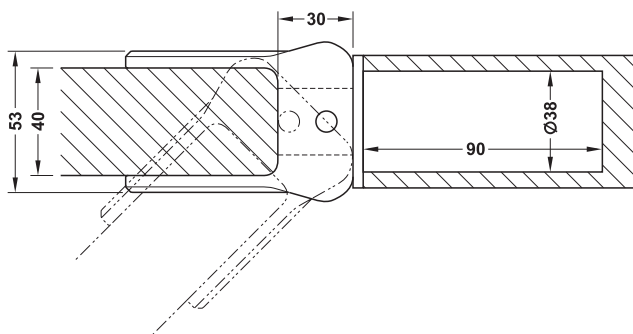
DGH-B 2015, HDE-en, 06/15; Dimensional data not binding. We reserve the right to alter specifications without notice.

## Double action spring hinge with hold open function

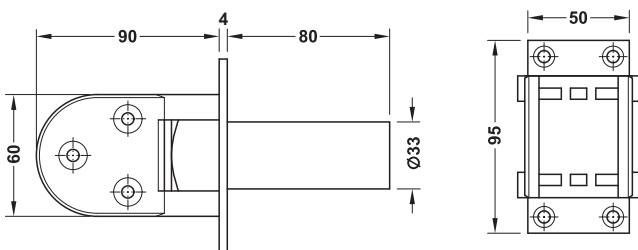
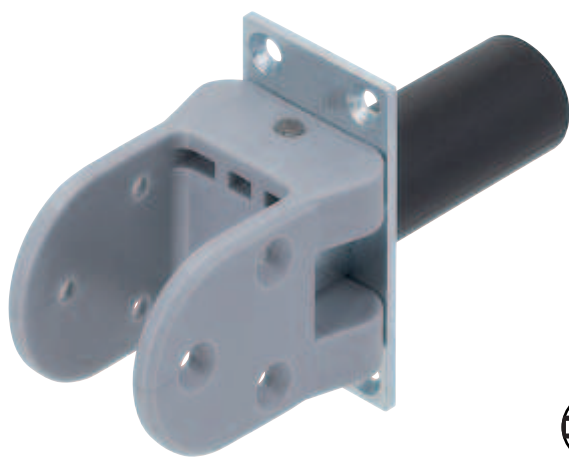
For flush doors, door thickness 40 mm

- Area of application: For wooden frames, for flush wooden interior doors
- Material: Mounting plate: Steel, bracket: Plastic
- Finish: Mounting plate: Galvanized
- Colour: Bracket: Black or grey
- For door thickness: 40 mm
- Opening angle: 100° swing action on both sides; **with hold open angle at approx. 90°**
- Door height: ≤2,000 mm
- Door width: ≤1,000 mm
- Mounting: For DIN left and DIN right hand use

### Installation

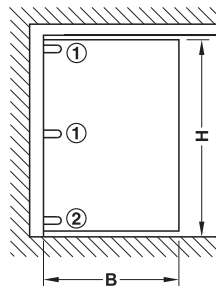


If both versions are combined, always mount model 41K on the top.



Model	Colour	Cat. No.
40K	Grey	927.00.435
	Black	927.00.436
41K	Grey	927.00.535
	Black	927.00.536

Reference table for maximum door weights



$$K = \frac{G \times 1/2 B}{H}$$

K = factor for type selection  
H = door height in mm  
B = door width in mm  
G = door weight in kg

Factor K	Door hinge ① model	Door hinge ② model	Door weight G
<4	40K	40K	<20 kg
4–6	41K	40K	20–30 kg
6–10	41K	41K	30–50 kg