

systainer® T-Loc Tool box



Practical transport and storage box, long life time due to solid construction and high-quality materials, with T-Loc rotary lock
Material: plastic light grey

Packing: 1 piece

| Dim. (W x D x H) mm | Cat. No. |
|---------------------|------------|
| 400 x 300 x 105 | 008.06.550 |
| 400 x 300 x 158 | 008.06.551 |
| 400 x 300 x 210 | 008.06.552 |
| 400 x 300 x 315 | 008.06.553 |

systainer® T-Loc Fitting case with 12 removable compartments



With 12 individually removable compartments, with T-Loc rotary lock
Material: plastic light grey

Packing: 1 piece

| Dim. (W x D x H) mm | Cat. No. |
|---------------------|------------|
| 400 x 300 x 105 | 008.05.400 |

systainer® T-Loc II Current distributor



Stackable and connectable, also with systainer® Tool-Box 1, systainer® T-Loc and systainer® Classic line, IP44 dust proof and splash proof with 5 integrated 230 V sockets (4 x outside, 1 x inside) and extending 10 m cable with building site suitability (H07RN 3 x 1.5 mm²), 2x recess for cable guide, with control light, thermo switch for indoor use
Weight: 3.95 kg

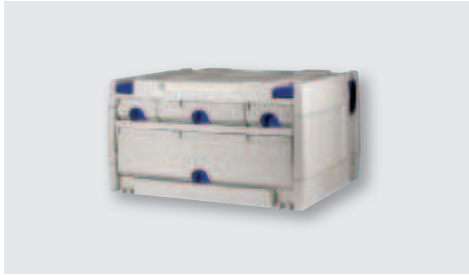
Packing: 1 piece

| Dim. (W x D x H) mm | Cat. No. |
|---------------------|------------|
| 396 x 296 x 157.5 | 008.06.559 |

Drawer systainer® tool box

For storing and transporting small items and consumables, all drawer systainer® can be interlinked
Material: Plastic light grey, with blue fasteners

→ With 4 drawers



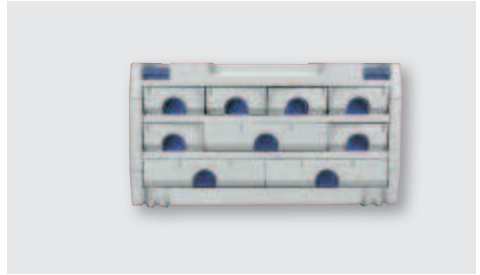
Technical data:

| Number of drawers | Dim. (W x D x H) mm |
|-------------------|---------------------|
| 1 piece | 350 x 250 x 85 |
| 1 piece | 172 x 250 x 34 |
| 2 pieces | 83 x 250 x 34 |

Packing: 1 piece

| Dim. (W x D x H) mm | Cat. No. |
|---------------------|------------|
| 400 x 300 x 210 | 008.06.541 |

→ With 9 drawers



Technical data:

| Number of drawers | Dim. (W x D x H) mm |
|-------------------|---------------------|
| 3 pieces | 172 x 250 x 34 |
| 6 pieces | 83 x 250 x 34 |

Packing: 1 piece

| Dim. (W x D x H) mm | Cat. No. |
|---------------------|------------|
| 400 x 300 x 210 | 008.06.543 |

sortainer® SYS-Sort T-Loc Tool box



Can be connected with: systainer® T-Loc, systainer® Classic Line, Toolbox, locking mechanism prevents unintentional opening of drawer, interior division can be individually configured because each drawer is equipped with ribs which can be used to hold partitions

Material: Plastic
Colour: Light grey

Packing: 1 piece

| Dim. (W x D x H) mm | Cat. No. |
|---------------------|------------|
| 396 x 296 x 315 | 008.06.580 |

systainer® Tool Box 2

Stackable and connectable, also with systainer® Tool-Box 1, systainer® T-Loc and systainer® Classic Line, 2 spacious, open compartments with deep centre bar for quickly stowing away tools, work material and accessories

Material: plastic
Colour: light grey
Weight: 2.0 kg

Packing: 1 piece

| Dim. (W x D x H) mm | Cat. No. |
|---------------------|------------|
| 396 x 296 x 250 | 008.06.870 |

systainer® Storage-Box Tool box

Stackable and connectable with the entire systainer® range (except MINI-systainer® T-Loc I), flexible configuration and clear organisation of small items, maximum inner storage space utilisation provided by fold-out upper compartments, with removable insert boxes (2x small, 2x medium, 1x large)

Material: plastic
Colour: light grey
Weight: 2.5 kg

Packing: 1 piece

| Dim. (W x D x H) mm | Cat. No. |
|---------------------|------------|
| 396 x 296 x 160 | 008.06.871 |

Roll board for Systainer³ CART „SYS-RB“



Allows ergonomic movement of large weights, connectable to any systainer[®] T-Lock and Systainer³, with four swivel castors

Material: Plastic, colour: Light grey, RAL 7035
Weight: 2.94 kg, load bearing capacity: 100 kg

Packing: 1 piece

| Dim. (W x D x H) mm | Cat. No. |
|---------------------|------------|
| 508 x 396 x 159 | 008.06.525 |

Lifting strap for systainer[®] T-Loc



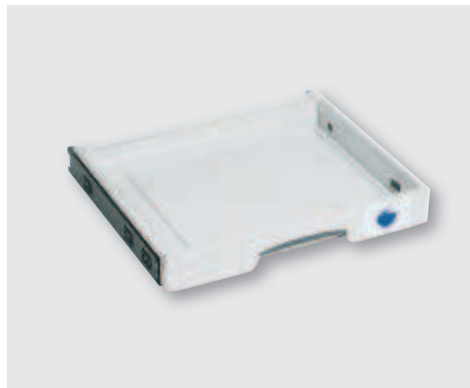
Facilitates carrying several systainers[®], even when the hands must remain free

Material: Fabric, colour: Blue

Packing: 1 piece

| Dim. (W x D x H) mm | Cat. No. |
|--|------------|
| Lifting strap for systainer [®] | 008.06.521 |

systainer[®] SYS-Auszug Drawer



Extending shelf, suitable for all systainer[®], except MINI-, MIDI- and MAXI-systainer[®], telescopic extension suitable for 32 mm series drilled holes for flexible positioning of the systainer[®] in your individual furnishings and equipment systems, high-quality full extension allows complete opening of the systainer[®] lid, central operating unit in anthracite for locking/unlocking, quick and easy self-installation
Load bearing capacity: 20 kg
Material: Plastic
Colour: Light grey

Packing: 1 or 5 pieces

| Dim. (W x D x H) mm | Cat. No. |
|---------------------|------------|
| 425 x 375 x 60 | 008.06.560 |

systainer[®] SYS-Roll Transportation aid



Easy transport of systainer[®] T-Loc and Classic Line I - V, drawer systainer[®], roll board and sack barrow function, easy stair movement due to extra large wheels, rotating front rollers with brake, integrated drawer for storage of small items, including variably adjustable safety belt
Weight: 6.5 kg
Load bearing capacity: 100 kg
Order reference:
Delivery without depicted systainer[®]

Packing: 1 piece

| Dim. (W x D x H) mm | Cat. No. |
|---------------------|------------|
| 600 x 440 x 1100 | 008.06.570 |

Fitting case with 14 compartments



With 14 compartments
Material: plastic anthracite and transparent

Packing: 1 piece

| Dim. (W x D x H) mm | Cat. No. |
|---------------------|------------|
| 340 x 260 x 60 | 008.05.700 |

Fitting case with 8 removable boxes



With 8 individually removable plastic boxes, one box can be subdivided twice, extra deep version, box stabilizers in the lid
Material: plastic anthracite transparent and yellow

Packing: 1 piece

| Dim. (W x D x H) mm | Cat. No. |
|---------------------|------------|
| 423 x 334 x 98 | 008.05.710 |

Tool case with castors



Lockable, telescopic handle, attachment facility for a saw or spirit level in the lid, portable insert for smaller tools
Material: plastic, black
Contents: 90 l

Packing: 1 piece

| Dim. (W x D x H) mm | Cat. No. |
|---------------------|------------|
| 768 x 476 x 490 | 008.05.010 |

Sortmaster Junior™ Stanley



Stackable and plugged together as organiser

Customisable interior dividers – up to 512 different configurations possible
Small parts remain in place – no movement from one compartment to another
Angled corners
Special lid construction – upper ribs close with internal dividers
Lid can be locked additionally
Three Sortmaster Junior™ organisers can be plugged together quickly and conveniently
Number of compartments: 14

Packing: 1 piece

| Dim. (W x D x H) mm | Cat. No. |
|------------------------|------------|
| 375 x 67 x 292 mm | 008.05.731 |