



5

Häfele Project Hinges

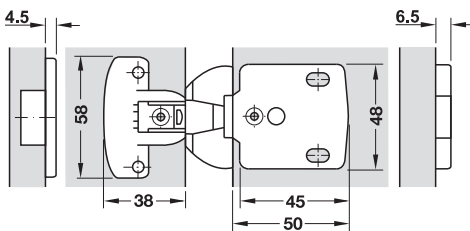
## Häfele Aximat 300 SM

For full overlay, half overlay, twin and inset mounting

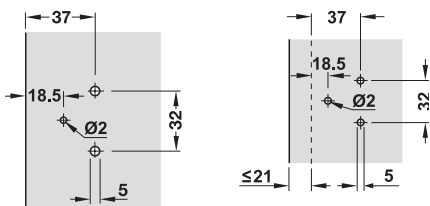


- > Opening angle: 270° (with full overlay mounting), 240° (with half overlay mounting) or 180° (with twin and inset mounting)
- > Material: Zinc alloy cup and hinge arm
- > Finish: Nickel plated
- > Hinge arm fixing: With spreading dowels with pre-mounted screws into 32 mm series drilled holes or with Euro screws
- > Installation: Door to cabinet: Without tools (quick fixing system) or with Euro screws
- > Side panel thickness: 19 mm
- > Door offset: 0 mm from opening angle 140° (from 180° with inset mounting)
- > Adjustment facility: Three-dimensional
- > With spring
- > For cabinet construction or continuous construction

### Installation dimensions



### Drilling pattern for fixing the hinge arm



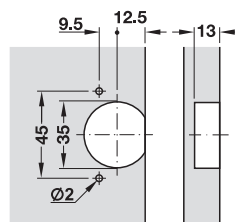
Full overlay mounting, half overlay mounting and twin mounting

Inset mounting

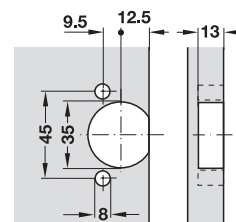
### Drilling pattern for cup fixing

For screw fixing

For press fitting



Drilling pattern 45/9.5

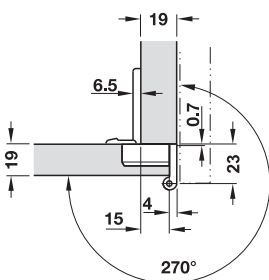


Drilling pattern 45/9.5

### Note

Dowel holes must be chamfered with HPL coated boards in order to avoid damaging the dowels during press fitting.

### → Full overlay mounting, gap 4 mm



- > Door thickness: 16–21 mm
- > Door overlay: 15 mm

#### Cup fixing

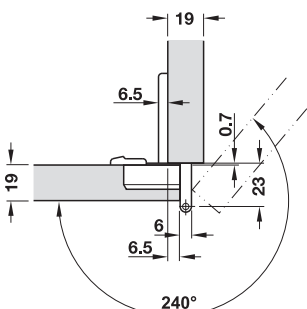
- For screw fixing
- For press fitting

Packing: 1 piece

#### Cat. No.

- 344.06.010
- 344.06.110

### → Half overlay mounting, gap 6 mm



- > Door thickness: 16–21 mm
- > Door overlay: 6.5 mm

#### Cup fixing

- For screw fixing
- For press fitting

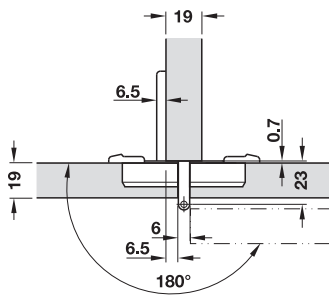
Packing: 1 piece

#### Cat. No.

- 344.06.011
- 344.06.111

DGH-M 2017, HDE-en, 10/16; Dimensional data not binding. We reserve the right to alter specifications without notice.

## → Twin mounting, gap 6 mm

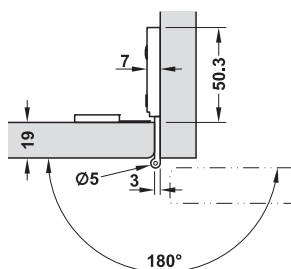


- > Door thickness: 16–21 mm
- > Door overlay: 6.5 mm

Cup fixing	Cat. No.
For screw fixing	344.06.002
For press fitting	344.06.102

Packing: 1 piece

## → Inset mounting, gap 3 mm



- > Door thickness: 16–19 mm, with chamfer: Radius 3.8–20.6 mm, >19 mm depending on the edge radius

Cup fixing	Cat. No.
For screw fixing	344.06.003
For press fitting	344.06.103

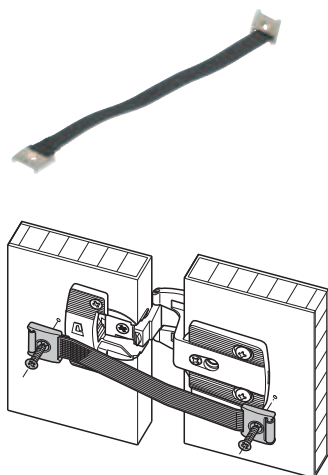
Packing: 1 piece

Technical information

► MB 5.146

## Accessories for Häfele Aximat 300

### → Opening angle restraint



- > Opening angle restraint: ≤120°, individual opening angle by shortening the strip
- > Material: Strip: Plastic fabric, screw-on parts: Zinc alloy
- > Finish/colour: Strip: Black, screw-on parts: Nickel plated
- > Installation: For screw fixing, hinge type independent

	Cat. No.
Opening angle restraint	344.00.991

Packing: 1 or 50 pieces

#### Order reference

Please order fixing material separately.

Special hinge for HPL doors	► MB 5.150
Hinge with short arm for HPL doors	► MB 5.173
Hinge with short arm for wooden doors	► MB 5.181