

Ball bearing runners

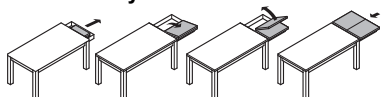
For 1 folding extension leaf

- > One-sided front extension "drawer principle"
- > Pull out profile aluminium, silver coloured anodized
- > For 2 people more at the table

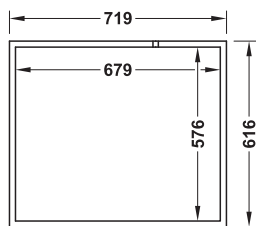
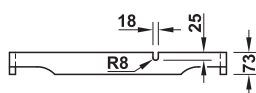


- > Area of application: For extending tables with front extension on one side
- > Material: Aluminium
- > Finish: Silver coloured anodized
- > Installation: For screw fixing to table top

Functionality

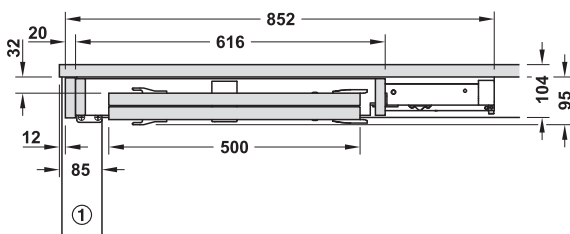


One folding extension leaf



Extension leaf frame

Installation



Technical data

Load bearing capacity	kg	90
Opening for extension leaves	mm	630
Width of extension leaves	mm	1 x 500
Total extension length	mm	1483

Note

The table length must be at least 1,900 mm when using front extensions for each front side.

Supplied with

- 1 set of table leaf extension runners
- 1 set of folding fittings
- 1 set of installation instructions

Installation length mm	Cat. No.
830	642.29.930

Packing: 1 set

Ball bearing runners

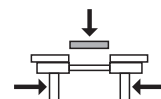
- > For 2 people more at the table



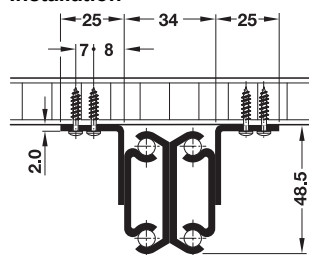
- > Material: Steel
- > Finish: Galvanized
- > Installation: For screw fixing beneath table top

→ For 1 extension leaf

Asynchronous



Installation



Technical data

Load bearing capacity	kg	90
Opening for extension leaf	mm	640
Width of extension leaf	mm	1 x 600
Total extension length	mm	1160
Mounting bracket length	mm	305
Recommended table length	mm	570–800

Note on choice of pull out table fitting

Installation length of pull out table fitting = approx. length of frame/base or approx. 2/3 of table diameter or table length without extension leaves

Installation length mm	Cat. No.
520	642.69.205

Packing: 1 set

Order reference

The set does not include 8 table top connecting fittings and 4 spring clips or 4 swivel lugs or 4 locking hooks. Please order separately.