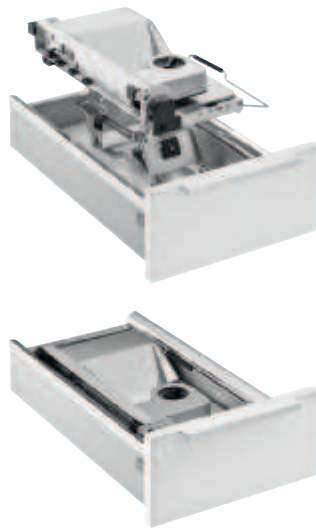


Ritterwerk AES 52 S General-purpose slicer

For installation in drawer

Vitaflex

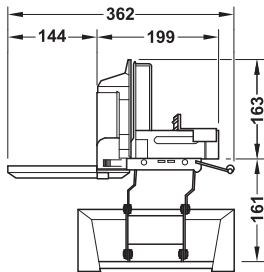


- > For cabinet width: Min. 300 mm
- > Internal installation width: >197 mm
- > Material: Housing: Aluminium alloy and plastic, sliding food carriage, residual holder and finger protection: Plastic, slice tray: Plastic, blade: Stainless steel, rustproof
- > Finish: Housing: Metallic silver
- > Dim.: 195 x 385 x 79 mm (W x D x H)
- > For panel thickness: Max. 60 mm
- > Mains voltage: 230 V / 50 Hz
- > Wattage: 65 W
- > Version: With slice thickness adjustment from 0–14 mm, sliding food carriage, finger protection, residual holder, quick cut-out/permanent switch, slice tray, release button, fold-in blocking device with adjusted slice thickness, serrated blade Ø 170 mm
- > Weight: 4.3 kg
- > Installation: Distance from drawer base panel to top edge of worktop: Max. 161 mm
- > Short-term load: 5 min.
- > Cutting: Right
- > With operating and installation instructions



7

Electrical Appliances



Model	Cat. No.
Ritterwerk AES 52 S general-purpose slicer	530.81.930

Packing: 1 piece