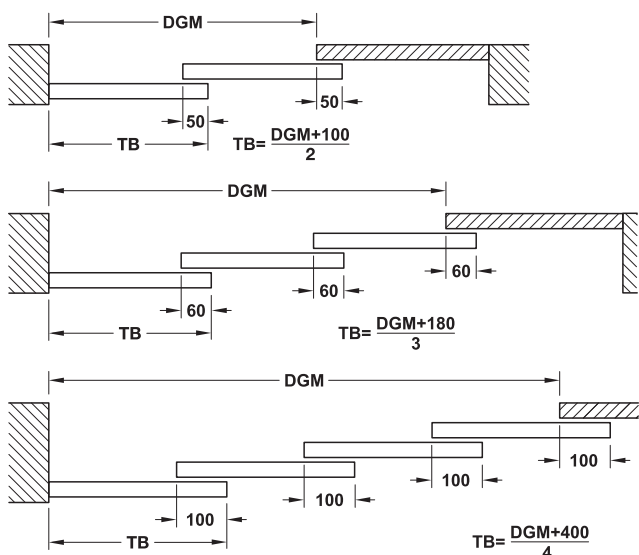
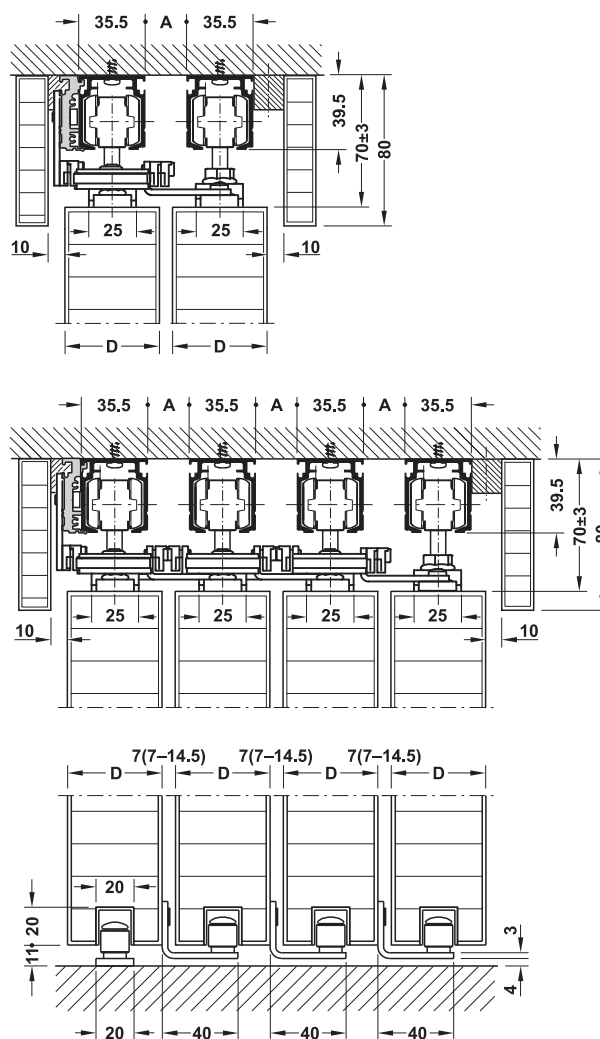


100-A Sliding door fitting, stacking



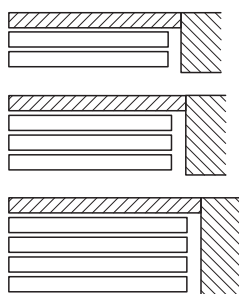
- > Area of application: For stacking doors of 2, 3 and 4-leaf systems
- > Door weight:
 - ≤ 100 kg for 2-leaf door systems,
 - ≤ 65 kg for 3-leaf door systems,
 - ≤ 50 kg for 4-leaf door systems
- > Door width: 600–1,200 mm
- > Door thickness: 35–50 mm
- > Adjustment facility: Door height adjustable
- > Installation: Ceiling installation

Ceiling installation



DGM = opening dim.
TB = door width

Parking situation:



Calculation of track distance: $A = D/2 - 3.5$
 A = track distance
 D = door thickness

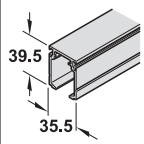
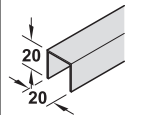
→ Set without running track

| Model | | Door weight kg | Supplied with | Cat. No. |
|----------------|-------------|-------------------|---|------------|
| 100-A stacking | For 2 doors | ≤100 | 4 running gears with support flange 2 track stoppers 1 floor guide 1 guide roller 2 followers 1 deflection unit 1 toothed belt (length 3000 mm) | 941.37.000 |
| | For 3 doors | ≤65 | 6 running gears with support flange 2 track stoppers 1 floor guide 2 guide rollers 4 followers 2 deflection units 1 toothed belt (length 6000 mm) | 941.37.001 |
| | For 4 doors | ≤50 | 8 running gears with support flange 2 track stoppers 1 floor guide 3 guide rollers 7 followers 3 deflection units 1 toothed belt (length 9000 mm) | 941.37.002 |

Note

Door width 600–1,200 mm and door thickness 35–50 mm, depending on approved door weight.

→ Tracks

| | | Material | Finish | Length mm | Cat. No. |
|---|---|-----------|--------------------------|--------------|------------|
| Running track, not drilled |  | Aluminium | Silver coloured anodized | 2000 | 940.97.722 |
| | | | | 3000 | 940.97.732 |
| | | | | 4000 | 940.97.742 |
| | | | | 6000 | 940.97.762 |
| Guide track, bottom floor guide, pre-drilled |  | Aluminium | Silver coloured anodized | 1000 | 941.37.801 |
| | | | | 2000 | 941.37.802 |

DGH-B-INT 2019, HDE-en, 12/18; Dimensional data not binding. We reserve the right to alter specifications without notice.

Door handles for sliding doors ▶ AH 1.74

▶ AH 7.194

Mortice locks ▶ AH 2.32

Flush pull handles ▶ AH 7.188