

### Table base

Combination of components

Modular table base system

- > Foot plate
- > Column
- > Shapes and colours can be combined



- > Area of application: For individual design and installation of table bases



#### Order reference

- > As table top size/base height increases, select a column with an appropriately large diameter of 76 or 100 mm.
- > For column diameter of 76 mm foot rings with diameter of 450 mm, storage pockets R 300 mm and bend lengths of 165° made of finely ground stainless steel are available on request

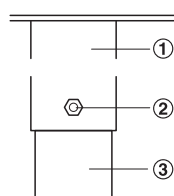
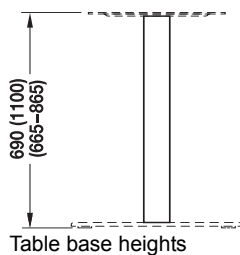
#### Note

Max. possible table top outer Ø with column height of  
 690 mm = Ø flat foot plate x 1.6  
 1,100 mm = Ø flat foot plate x 1.3  
 square in respective proportion

#### → Column



Round, rigid    Square, rigid    Round, with height adjustment



- Height adjustment
- ① Outer tube
  - ② Locating screw
  - ③ Inner tube

- > Installation: For screw fixing to foot plate and mounting plate
- > Material thickness: Columns 2 mm, cover 0.8 mm

#### Supplied with

Fixing material

Cross section mm	Material	Finish/colour	Cat. No.
<b>Rigid, for height of 690 mm</b>			
Ø 60	Stainless steel	Finely ground	638.44.051
	Steel	Chrome plated	638.44.251
		Fine structure powder coated, black, similar to RAL 9005	638.44.351
		White aluminium, RAL 9006	638.44.451
60 x 60	Stainless steel	Finely ground	638.44.004
	Steel	White aluminium, RAL 9006	638.44.404
Ø 76	Stainless steel	Finely ground	638.44.052
	Steel	Chrome plated	638.44.252
		Fine structure powder coated, black, similar to RAL 9005	638.44.352
		White aluminium, RAL 9006	638.44.452
80 x 80	Stainless steel	Finely ground	638.44.005
	Steel	White aluminium, RAL 9006	638.44.405
Ø 100	Stainless steel	Finely ground	638.44.053
	Steel	Chrome plated	638.44.253
		Fine structure powder coated, black, similar to RAL 9005	638.44.353
		White aluminium, RAL 9006	638.44.453
<b>Rigid, for height of 1,100 mm</b>			
Ø 76	Stainless steel	Finely ground	638.44.072
	Steel	Chrome plated	638.44.272
		Fine structure powder coated, black, similar to RAL 9005	638.44.372
		White aluminium, RAL 9006	638.44.472
Ø 100	Stainless steel	Finely ground	638.44.073
	Steel	Chrome plated	638.44.273
		Fine structure powder coated, black, similar to RAL 9005	638.44.373
		White aluminium, RAL 9006	638.44.473
<b>With height adjustment, for height of 665–865 mm</b>			
Ø 100/108	Stainless steel	Finely ground	638.44.023
	Steel	Chrome plated	638.44.223
		Fine structure powder coated, black, similar to RAL 9005	638.44.323
		White aluminium, RAL 9006	638.44.423

Packing: 1 piece



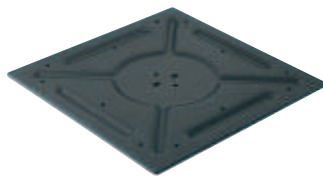
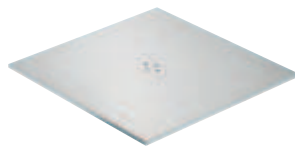
### → Flat foot plate and mounting plate

Round or square

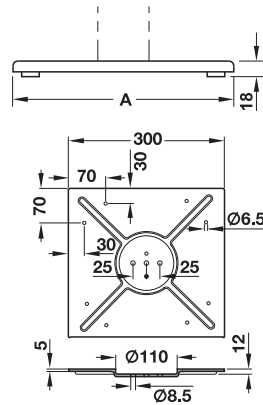
For table tops up to Ø 900 mm



Foot plate



Mounting plate for table top



> Installation: For screw fixing to columns

#### Supplied with

1 Foot plate, consists of:

Steel plate with 5 adjusting screws, adjusting range ±3 mm

Flat cover for steel plate

1 Steel mounting plate, powder coated, black

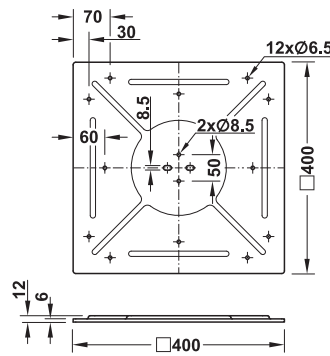
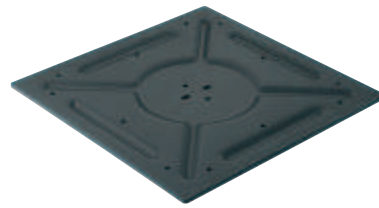
Dim. A mm	Material	Finish/colour	Cat. No.
400 x 400	Stainless steel	Finely ground	638.44.014
	Steel	White aluminium, RAL 9006	638.44.414
475 x 475	Stainless steel	Finely ground	638.44.015
	Steel	White aluminium, RAL 9006	638.44.415
Ø 500	Stainless steel	Finely ground	638.44.044
	Steel	Chrome plated	638.44.244
		Fine structure powder coated, black, similar to RAL 9005	638.44.344
		White aluminium, RAL 9006	638.44.444
Ø 590	Stainless steel	Finely ground	638.44.045
	Steel	Chrome plated	638.44.245
		Fine structure powder coated, black, similar to RAL 9005	638.44.345
		White aluminium, RAL 9006	638.44.445
600 x 600	Stainless steel	Finely ground	638.44.016
	Steel	White aluminium, RAL 9006	638.44.416
Ø 680	Stainless steel	Finely ground	638.44.046
	Steel	Fine structure powder coated, black, similar to RAL 9005	638.44.346
		White aluminium, RAL 9006	638.44.446

Packing: 1 piece

### → Accessories

#### Reinforced mounting plate

For table top Ø up to 1,200 mm



> Material: Steel  
 > Finish: Powder coated black  
 > Installation: For screw fixing

Dim. (L x W x H) mm	Cat. No.
400 x 400 x 12	638.44.081

Packing: 1 piece

### → Accessories

#### Mounting plate for glass tables

For glass table top Ø up to 1,000 mm



#### Installation reference

Only to be used in combination with rigid columns.

> Material: Stainless steel  
 > Finish: Finely ground  
 > Installation: For bonding to glass or stone table tops

Diameter mm	Cat. No.
60.4	638.44.091
85.0	638.44.092
110.0	638.44.093

Packing: 1 piece

UV adhesives

► MB 14.18

DGH-M 2017, HDE-en, 10/16; Dimensional data not binding. We reserve the right to alter specifications without notice.