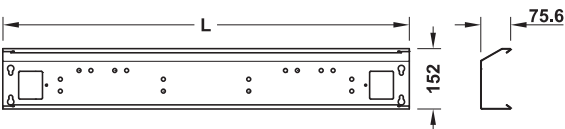


Cable channel



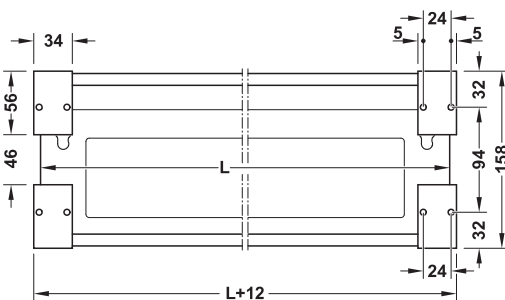
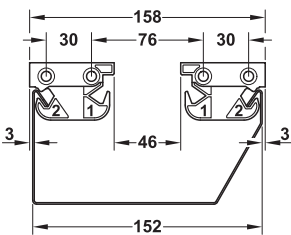
Power outlet box holder



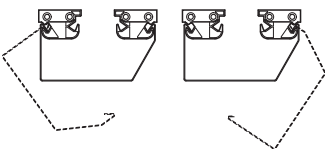
Strain relieve



Excess cable holder



Installation



- > Area of application: For accommodating power outlet boxes and cable
- > Material: Steel
- > Installation: For screw fixing

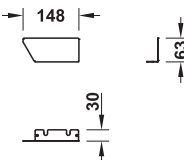
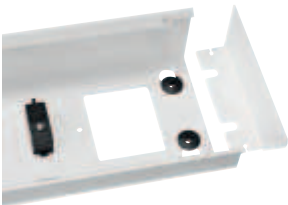
Supplied with

- 1 Cable channel
- 2 Strain relieves
- 2 Power outlet box holders
- 2 Excess cable holders
- 4 Fixings for cable channel

Length mm	White aluminium, RAL 9006	Graphite black, RAL 9011	Traffic white, RAL 9016
1024	631.03.221	631.03.321	631.03.721
1224	631.03.222	631.03.322	631.03.722
1424	631.03.223	631.03.323	631.03.723
1624	631.03.224	631.03.324	631.03.724
1824	631.03.225	631.03.325	631.03.725

Packing: 1 set

→ Clip-on panel for cable channel



- > Area of application: For closing the lateral opening of the cable channel
- > Material: Steel
- > Finish: Powder coated
- > Version: Clip-on panel with connector
- > Installation: For clipping on

Colour	Cat. No.
White aluminium, RAL 9006	631.03.210
Graphite black, RAL 9011	631.03.310
Traffic white, RAL 9016	631.03.710

Packing: 1 set

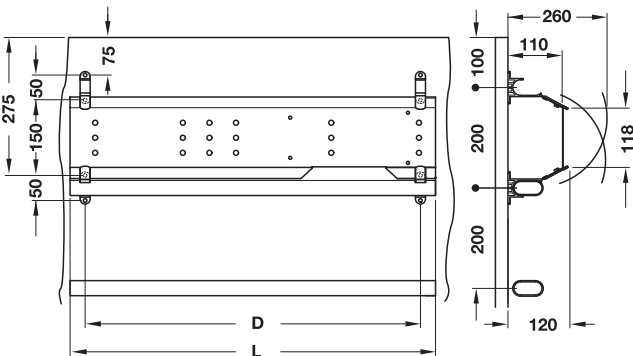
Cable channel



- > Area of application: For holding control unit, power outlet boxes, strain relief and cable
- > Material: Steel
- > Finish/colour: Powder coated, white aluminium, RAL 9006
- > Installation: For suspending and screw fixing, can be used with or without frames
- > Folds down at both sides

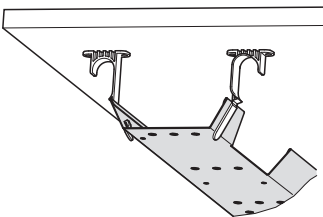
Dim. D mm	Dim. L mm	Cat. No.
500	559	654.69.206
700	759	654.69.208
900	959	654.69.210

Packing: 1 piece

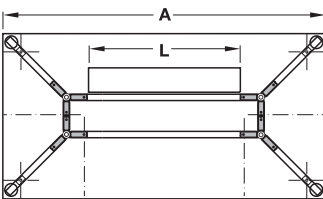


Installation

Häfele Idea



- > Clip holders into cable channel
- > Place cable channel into frames
- > Route sockets and cables
- > Screw holders to table top from below



Idea 300

Length of cable channel = A – 641 mm