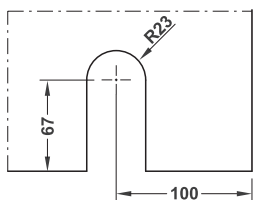


Häfele Slido D-Line802 150T Sliding door fitting with full circle roller

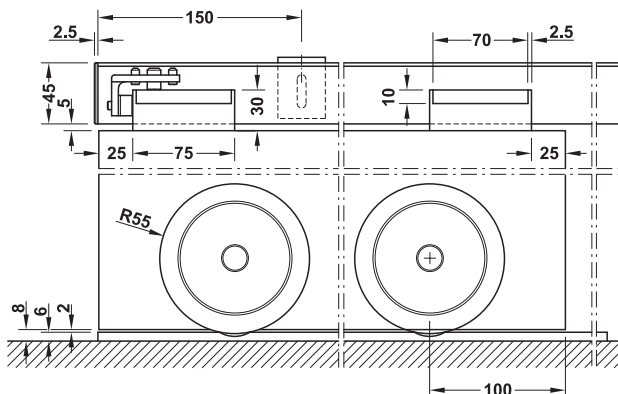


Full circle roller

Cut-out dimensions

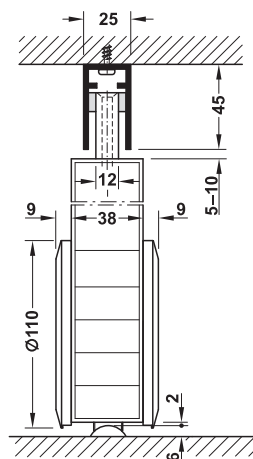


Section running gear and top guide

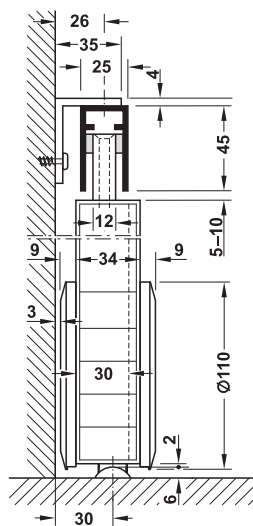


- > Area of application: For 1-leaf and 2-leaf sliding doors
- > Door weight: ≤150 kg
- > For door thickness: 30–45 mm
- > Adjustment facility: Wall distance guide track +6 mm, height: With wall bracket ±8 mm, in the area of the roller +7 mm
- > Installation: Wall mounting and ceiling installation with positive-fit clamp connection
- > Material: Roller and running track: Stainless steel, guide track: Aluminium

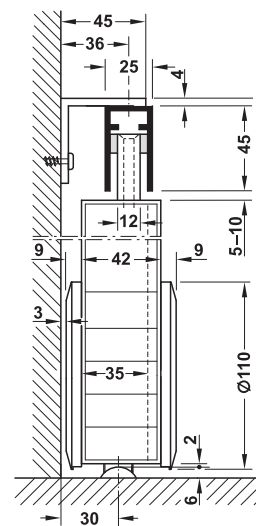
Ceiling installation



Wall mounting



Wall mounting with mounting bracket, length 25 mm



Wall mounting with mounting bracket, length 45 mm

Note

The wall distance of the door is always the same, also with different door thicknesses.
Use large wall bracket to increase the wall distance, e.g. for skirting.

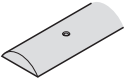
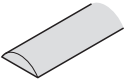
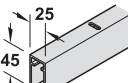
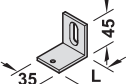
→ Set without running track for 1 door

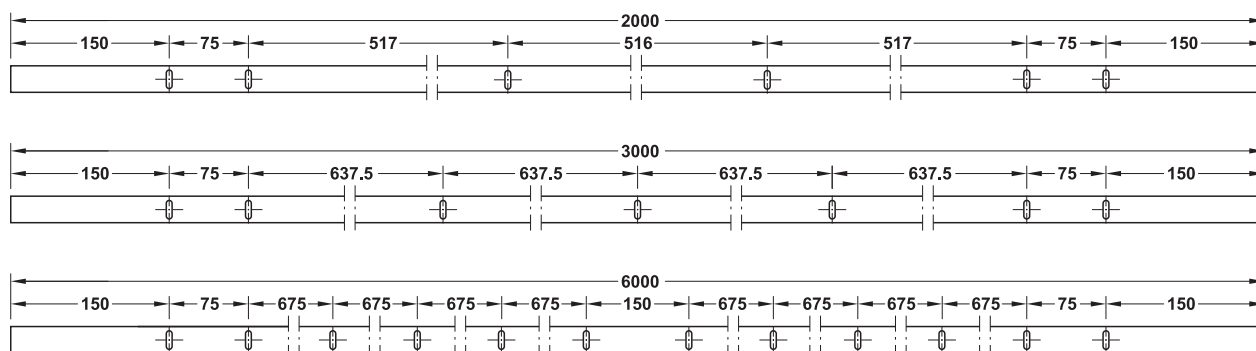
Model	For door thickness mm	Supplied with	Cat. No.
150T full circle roller	30–45	2 running gears Felt glide strips 2 guide ribs 2 stoppers Mounting material	941.58.010

Order reference

Order 2 sets for 2-leaf sliding doors.

→ Tracks and accessories

		Material	Finish/colour	Length mm	Cat. No.
Running track, pre-drilled, 20 x 6 mm (W x H)		Stainless steel	Satin	2000	941.58.920
Running track, pre-drilled, 2-piece, 20 x 6 mm (W x H)				3000	941.58.930
Running track, pre-drilled, 2-piece, 20 x 6 mm (W x H)				6000	941.58.960
Running track, not drilled, 20 x 6 mm (W x H)		Stainless steel	Satin	2000	941.58.820
Running track, not drilled, 2-piece, 20 x 6 mm (W x H)				3000	941.58.830
Running track, not drilled, 2-piece, 20 x 6 mm (W x H)				6000	941.58.860
Guide track, pre-drilled, including a pair of plastic end caps		Aluminium	Stainless steel coloured anodized	2000	941.58.720
Guide track, pre-drilled, including a pair of plastic end caps				3000	941.58.730
Guide track, pre-drilled, including a pair of plastic end caps				6000	941.58.760
Wall mounting bracket, height adjustable, length (L) = wall distance		Aluminium	Stainless steel coloured anodized	25	941.58.060
Wall mounting bracket, height adjustable, length (L) = wall distance				35	941.58.062
Wall mounting bracket, height adjustable, length (L) = wall distance				45	941.58.061
Wall mounting bracket, height adjustable, length (L) = wall distance				65	941.58.063



Drill holes in guide track

Door handles for sliding doors	► BB 3.122
Mortice locks	► BB 4.28 ► BB 9.362
Door seals for sliding doors	► BB 9.136
Flush pull handles	► BB 9.371