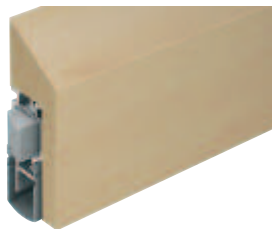
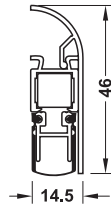


Schall-Ex® Applic Retractable door seal

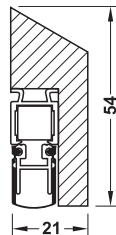
Soundproofing without grooves
For retrofitted smoke control



Schall-Ex® Applic A



Schall-Ex® Applic T



- > Area of application: For soundproof doors (DIN 4109) for smoke control doors in compliance with EN 1634-3 for fire resistant doors in compliance with EN 1634-1
- > Material: Applic A cover profile: Aluminium, Applic T cover profile: Oak sealing profile: Silicone, self-extinguishing
- > Finish: Applic A cover profile: Silver coloured anodized or white (RAL 9016), Applic T cover profile: Untreated oak, for matching the finish of the door on site, sealing profile: Grey
- > Version: Single-side release (hinge side)
- > Sealing height: ≤11 mm
- > Installation: For screw fixing to push side, can be shortened at one end by ≤125 mm cover profile is clipped into the screwed on sealing profile (Applic A) or screwed onto sealing profile (Applic T)
- > Mounting: For DIN left and DIN right hand use

Supplied with

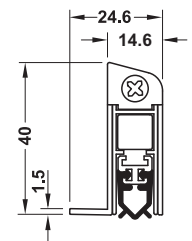
- 1 retractable door seal
- 1 cover profile
- 1 release plate with screw
- 5 countersunk head screws, galvanized
- 4 countersunk head screws, yellow galvanized

Length mm	Applic A		Applic T Oak
	Silver coloured anodized	White, RAL 9016	
805	950.15.500	950.15.510	950.15.520
930	950.15.501	950.15.511	950.15.521
1055	950.15.502	950.15.512	950.15.522

Order reference

Fixed lengths available on request.

Wind-Ex® US Retractable door seal



- > Material: Carrier: Aluminium, sealing profile: PVC, cover profile: Aluminium
- > Finish: Sealing profile: Grey, cover profile: Dark bronze anodized, silver coloured anodized or white
- > Version: Single-side release
- > Sealing height: ≤11 mm
- > Installation: Concealed, from underneath to door leaf, can be shortened at one end by ≤125 mm, can be retrofitted
- > Mounting: For DIN left and DIN right hand use

Supplied with

- 1 retractable door seal
- 1 pressure plate
- 6 chipboard screws 3 x 16 mm
- 1 contact wedge
- 2 surface mounted covers
- 1 countersunk head screw 4.2 x 50 mm

Length mm	Dark bronze anodized	Silver coloured anodized	White
735	950.07.830	950.07.820	950.07.840
860	950.07.831	950.07.821	950.07.841
985	950.07.832	950.07.822	950.07.842
1110	950.07.833	950.07.823	950.07.843

Semi-circular threshold trim	▶ AH 6.21
Flat threshold trim	▶ AH 6.22