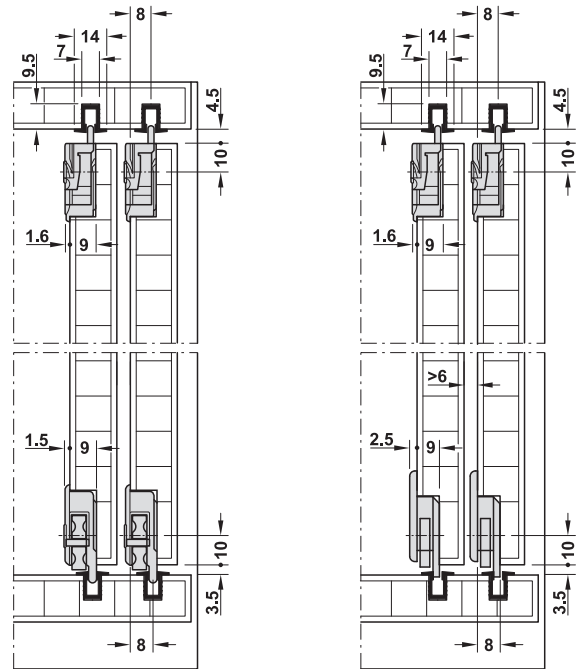


## Häfele Slido F-Line12 30B



- ▷ Door thickness: 15–28 mm
- ▷ Material: Cup and running gear: Plastic  
Bottom running gear: Metal
- ▷ Running gear: Double bearing mounted axle
- ▷ Running gear guided by: Track for press fitting and glue fixing into groove
- ▷ Adjustment facility: Height ±1 mm using eccentric screw when using adjustable running gear
- ▷ Installation: Track for press fitting and glue fixing into groove, guide and running gear for press fitting and screw fixing into drill hole

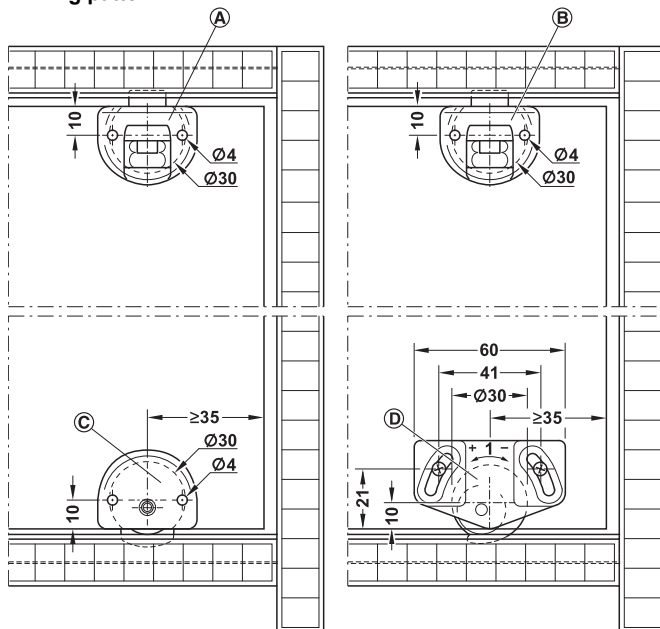
### Installation dimensions



Running gear without height adjustment

Running gear with height adjustment

### Drilling pattern

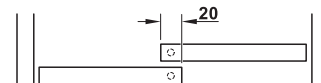


Running gear without height adjustment

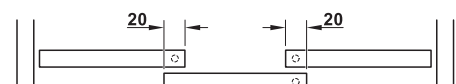
Running gear with height adjustment

- Ⓐ Guide with spring-loaded catch – catch is spring-loaded when extended
- Ⓑ Guide with lockable bolt – bolt locks when extended/retracted
- Ⓒ Running gear without height adjustment
- Ⓓ Running gear with height adjustment

### Door overlap



Cabinet with 2 doors



Cabinet with 3 doors

## → Set

|            |  | Version                        | Supplied with               | Colour | Cat. No.   |
|------------|--|--------------------------------|-----------------------------|--------|------------|
| For 1 door | Running gear with height adjustment    | Guide with lockable bolt       | 2 running gears<br>2 guides | Grey   | 404.22.025 |
|            |  | Guide with spring-loaded catch | 2 running gears<br>2 guides | Grey   | 404.22.027 |
|            | Running gear without height adjustment | Guide with lockable bolt       | 2 running gears<br>2 guides | Grey   | 404.22.026 |
|            |  | Guide with spring-loaded catch | 2 running gears<br>2 guides | Grey   | 404.22.028 |

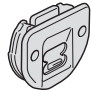


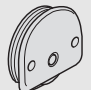
Packing: 1 set

### Order reference

Please order running and guide track separately.

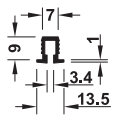
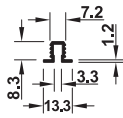
For cabinets with multiple doors, please order set for 1 door several times.

## → Individual components

|  |   | Material                                    | Colour | Cat. No.   |
|--|---|---|--------|------------|
| Guide, with spring-loaded catch            |    | Plastic                                     | Grey   | 404.21.201 |
| Guide, with lockable bolt                  |    | Plastic                                     | Grey   | 402.21.200 |
| Running gear, with height adjustment ±1 mm |   | Running gear: Plastic,<br>roller: Polyamide | Grey   | 402.21.101 |
| Running gear, without height adjustment    |  | Running gear: Plastic,<br>roller: Polyamide | Grey   | 404.21.100 |

Packing: 1 or 500 pieces

## → Tracks

|   |   | Material  | Door weight kg | Colour                   | Length m | Cat. No.   |
|---|---|-----------|----------------|--------------------------|----------|------------|
| Single top/bottom running and guide track |  | Plastic   | Max. 15 kg     | Brown                    | 3.0      | 404.14.133 |
|   |   |           |                | Black                    | 3.0      | 404.14.313 |
|   |   |           |                | White                    | 3.0      | 404.14.713 |
|   |   |           |                | Silver coloured          | 3.0      | 404.14.913 |
| Single top/bottom running and guide track |  | Aluminium | Max. 30 kg     | Silver coloured anodized | 3.0      | 404.16.904 |

Packing: 1 piece

Straightening fittings ► MB 10.228

Handles for sliding doors ► MB 10.233

