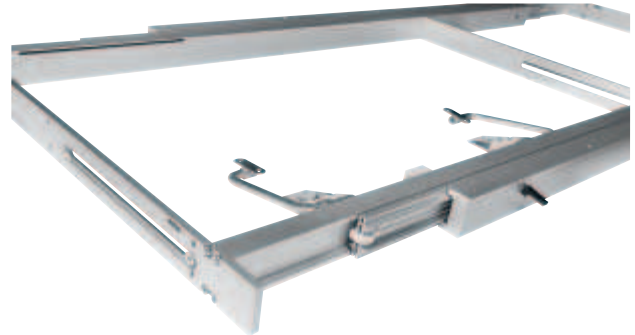
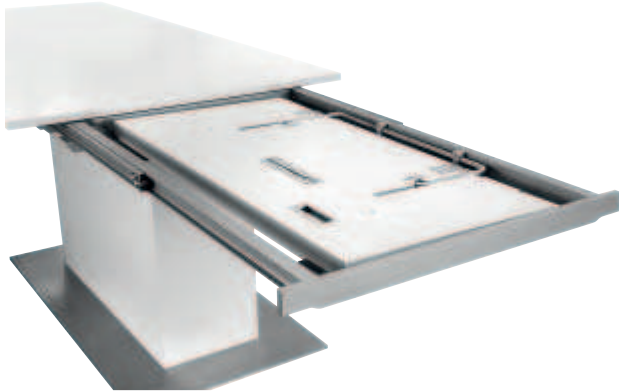


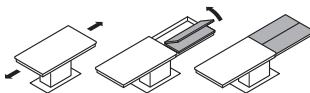
Roller runners

With synchro drive for fixed table foot, for 1 folding extension leaf

- > Flat pull out profile allows for an attractive design
- > Pull out profile aluminium, silver coloured anodized
- > Set complete with pull out frame (after connecting the folding fitting)
- > For 4–6 people more at the table
- > Foot position can be selected individually



Functionality



Installation

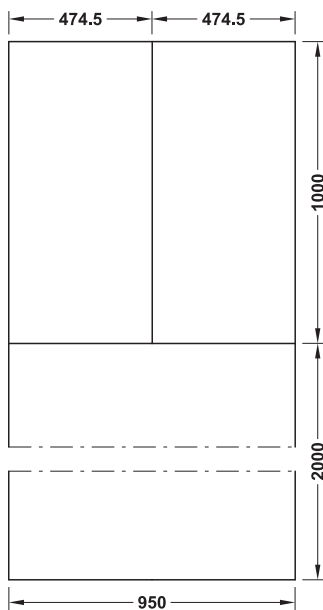
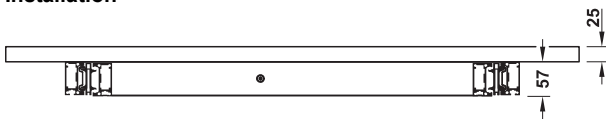


Table top dimensions

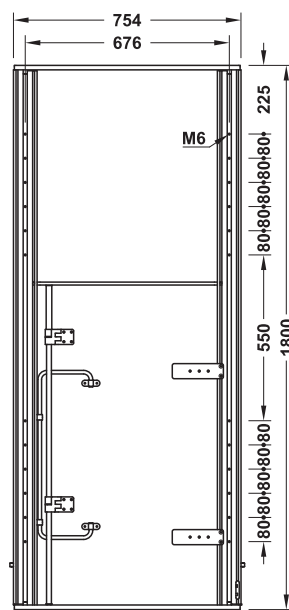


Table base fixing options

- > Area of application: For pull out tables with central table foot or with side panels/leg frame bases
- > Material: Aluminium
- > Finish: Silver coloured anodized
- > Installation: For screw fixing to table top

Technical data

Load bearing capacity	kg	90
Total extension length	mm	1,800
For table top size	mm	2,000 x 950
Folding extension leaf	mm	1,000 x 950 (2 x 1,000 x 474.5)

Note

Foot position optional at intervals of 80 mm, fixing with M6 thread in construction frame

Supplied with

- 1 Set of table leaf extension runners with pull out frame
- 1 Set of folding fittings
- 1 Set of installation instructions

Installation length mm	Cat. No.
1800	642.29.940

Packing: 1 set