

Glass door pivot hinge

External pivot, opening angle 210°



For all-glass constructions



For glass/wood constructions

- > Diameter: 20 or 30 mm
- > Material: Stainless steel
- > Finish: Satin
- > For glass thickness: Max. 12 mm

Installation

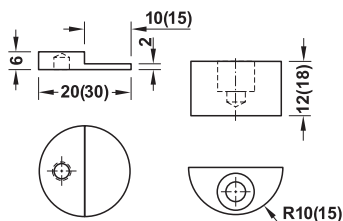
A threaded pin in the hinge allows the door to be removed after bonding.

Recommended door ratio:

Ratio height to width 3:2 must not be exceeded!

→ For all-glass constructions

For inset doors



- > Installation: For glue fixing (UV glass bonding)

Supplied with

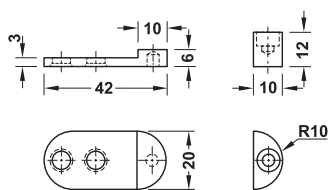
Installation instructions

Diameter mm	Max. chamfer length (45°)	Load bearing capacity kg	Cat. No.
20	1.0	10 kg/pair	361.51.000
30	1.0–1.5	20 kg/pair	361.51.010

Packing: 1 pair

→ For glass/wood constructions

For inset doors



- > Installation: For glue fixing (UV glass bonding), for recess mounting

Supplied with

Installation instructions

Diameter mm	Max. chamfer length (45°)	Load bearing capacity kg	Cat. No.
20	1.0	10 kg/pair	361.61.000
30	1.0–1.5	20 kg/pair	361.61.010

Packing: 1 pair

