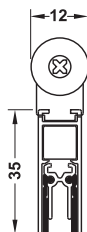
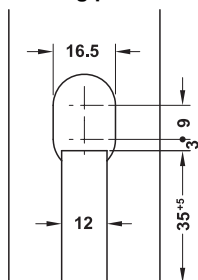


Schall-Ex® Slide & Lock M-12 WS Retractable door seal

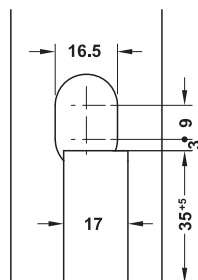


- > Area of application: For sliding doors **without lock**, for automatic sliding doors, for sliding doors where soundproofing, smoke control and fire resistance are required
- > Material: Carrier: Aluminium, sealing profile: Silicone, self-extinguishing
- > Finish: Carrier: Silver coloured, sealing profile: Grey
- > Version: Single-side release
- > Sealing height: ≤11 mm
- > Installation: For full mortice fitting, with fixing brackets, can be shortened at one end by ≤125 mm
- > Installation dim.: Groove: 12 x 35 mm (with floor guide 17 x 35 mm)
- > Mounting: For DIN left and DIN right hand use
- > Low release pressure (only 20 N/m)
- > Adhesive magnet integrated in fixing bracket prevents unintentional opening

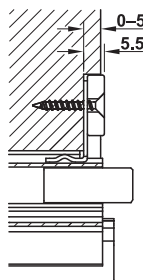
Routing pattern



Without floor guide



With floor guide



Routing depth

Supplied with

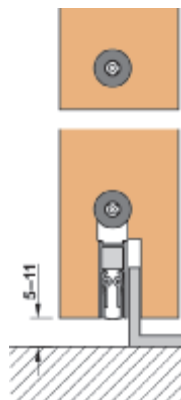
- 1 sliding door seal
- 2 fixing brackets with screws
- 1 pressure plate, 1.5 mm thick
- 1 adhesive magnet

Length mm	Cat. No.
833	950.05.282
958	950.05.283
1083	950.05.284

Order reference

Special lengths up to 1,958 mm and other sliding door seals for different door thicknesses available on request.

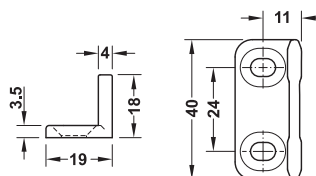
→ Accessories



Sliding door seal with floor guide and additional adhesive magnet

- > Installation: Floor gap 5–11 mm when using the floor guide

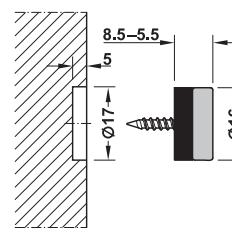
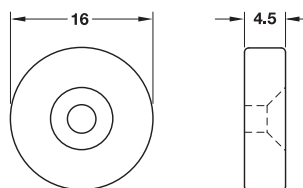
Floor guide



- > Material: Plastic
- > Colour: Grey
- > Fixing material supplied

	Cat. No.
Floor guide	950.05.180

Adhesive magnet



Routing depth

- > Area of application: Additional adhesive magnet for top side, provides exact alignment of closed door
- > Holding power: Approx. 70 N

Supplied with

- 1 adhesive magnet
- 1 pressure plate
- 3 screws

	Cat. No.
Adhesive magnet	950.05.182

Schall-Ex Slide & Lock M-20 WS
Retractable door seal



- > Area of application: For sliding doors **without lock**, for automatic sliding doors, for sliding doors where soundproofing, smoke control and fire resistance are required
- > Material: Carrier: Aluminium, sealing profile: Silicone, self-extinguishing
- > Finish: Carrier: Anodized, sealing profile: Grey
- > Version: Single-side release
- > Sealing height: ≤12 mm
- > Installation: For full mortice fitting, with fixing bracket, can be shortened at one end by ≤125 mm
- > Mounting: For DIN left hand and DIN right hand use
- > Low release pressure (only 20 N/m)
- > Adhesive magnet integrated in fixing bracket prevents unintentional opening

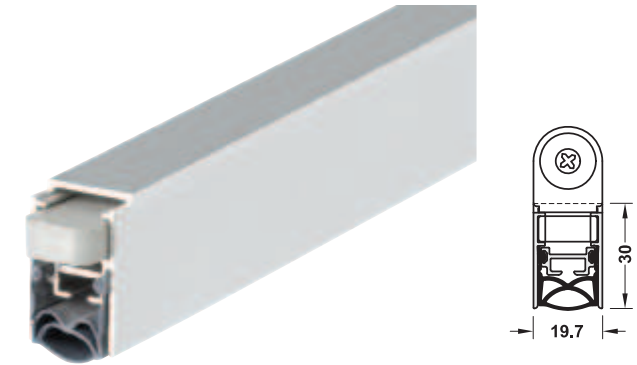
Supplied with

- 1 sliding door seal
- 2 fixing brackets with screws
- 1 pressure plate, 1.5 mm thick
- 1 adhesive magnet

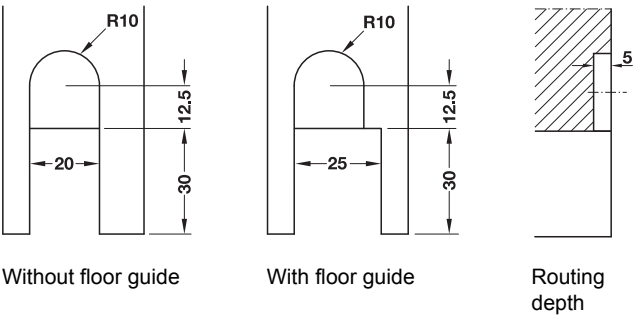
Length mm	Cat. No.
833	950.05.172
958	950.05.173
1083	950.05.174

Order reference

Special lengths up to 2,000 mm and other sliding door seals for different door thicknesses available on request.



Routing pattern



DGH-B-INT 2019, HDE-en, 12/18; Dimensional data not binding. We reserve the right to alter specifications without notice.

6

GAEB

CAD