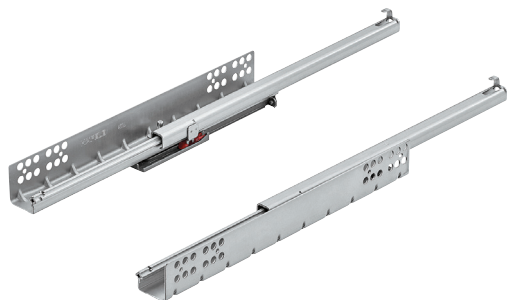


Single extension

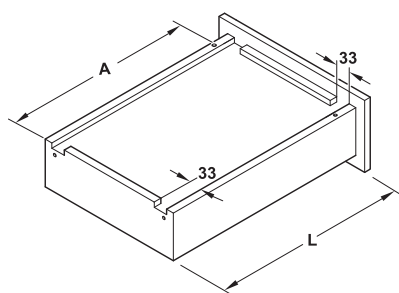
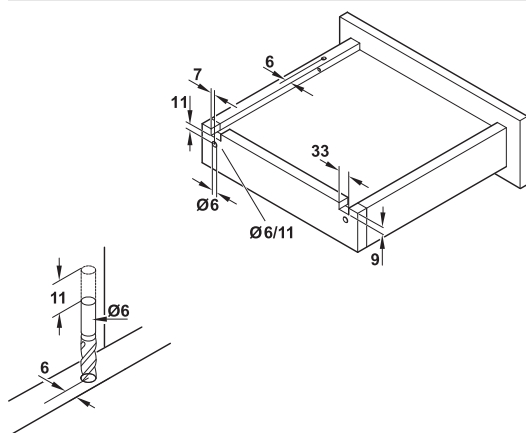
Load bearing capacity up to 25 kg, pin installation, with self closing mechanism and self closing mechanism or Push-to-Open



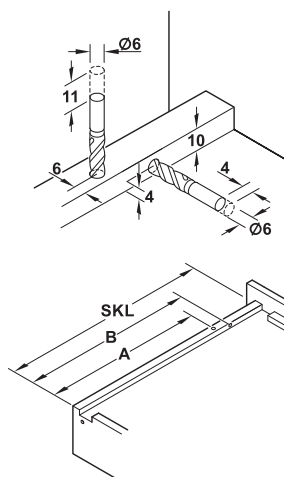
- > Adjustment facility: max. height adjustment + 2 mm
- > Material: Steel
- > Finish: Galvanized
- > Dim.: Max. drawer width SB = internal cabinet width – 40 mm + 2 x drawer side panel thickness
- > For side panel thickness: 16 mm
- > Self closing mechanism and self closing mechanism or Push-to-Open

Concealed Runners

8

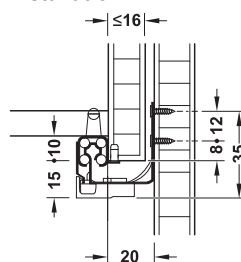


Installation reference for retaining clip

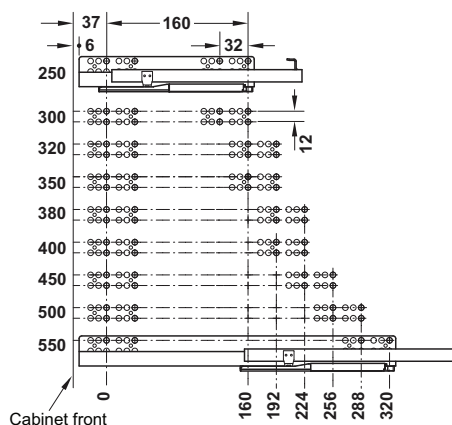


NL mm	SKL mm	A mm	B mm
250	250	188.5	212.5
300	300	188.5	212.5
320	320	221.5	245.5
350	350	221.5	245.5
380	380	249.5	273.5
400	400	249.5	273.5
450	450	283.5	307.5
500	500	309.5	333.5
550	550	338.5	362.5

Installation



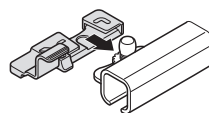
Drilling pattern



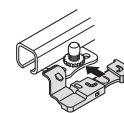
Drawer length SL mm	Cabinet depth mm	Extension length AL mm	With Push to Open	With self closing and soft closing mechanisms
250	268	184	433.08.170	433.08.225
300	318	234	433.08.171	433.08.230
320	338	242	433.08.172	433.08.232
350	368	272	433.08.173	433.08.235
380	398	302	433.08.174	433.08.238
400	418	310	433.08.175	433.08.240
450	468	348	433.08.176	433.08.245
500	518	386	433.08.177	433.08.250
550	568	436	433.08.178	433.08.255

Packing: 1 or 10 pairs

→ Retaining clip



Left



Right

Version	Cat. No.
Right	433.06.025
Left	433.06.026

Packing: 1 or 100 pieces

DGH-M-INT 2020, HDE-en, 05/19. Dimensional data not binding. We reserve the right to alter specifications without notice.