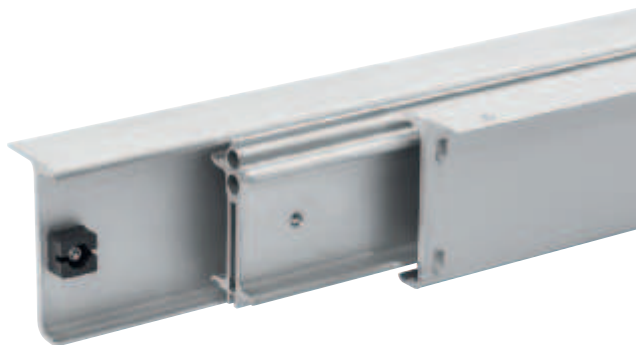


## Ball bearing runners

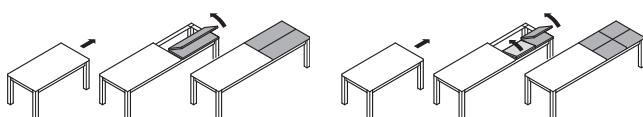
For 1 or 2 folding extension leaves



- > Pull out profile aluminium, silver coloured anodized
- > For 2–4 people more at the table



### Functionality



One folding extension leaf

Two folding extension leaves

- > Area of application: For extending tables with frame, one-side extension
- > Material: Runners: Aluminium, folding fitting: Steel
- > Finish: Runners: Silver coloured anodized, folding fitting: Galvanized
- > Installation: For screw fixing to table top and pull out frames

### Technical data

Installation length	mm	940	1400	1800
Load bearing capacity	kg	115	115	115
Opening for extension leaves	mm	1130	1130	1130
Width of extension leaves	mm	1 x 1000 or 2 x 500		
For table top length	mm	1040–1500	1500–1900	1900–2400

### Note

Pull out frame for fixing the folding fittings must be manufactured on site in accordance with the installation instructions.

### Supplied with

- 1 set of table leaf extension runners
- 1 set of folding fittings
- 2 inset castors
- Installation instructions

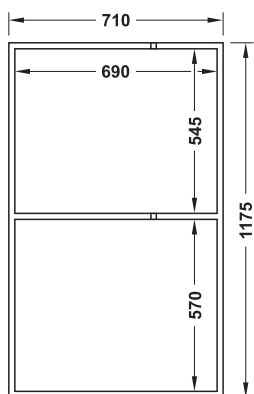
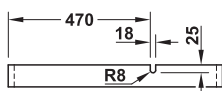
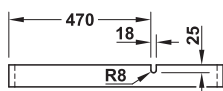
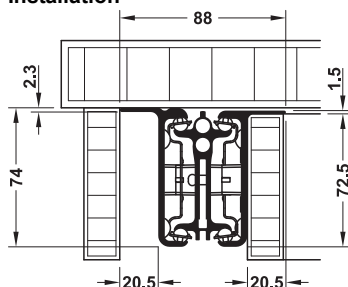
Installation length mm	Cat. No.
940	642.25.931
1400	642.25.934
1800	642.25.936

Packing: 1 set

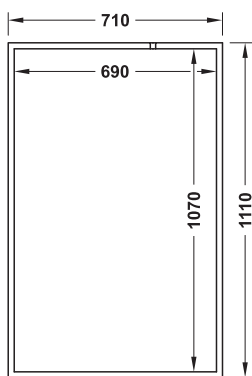
### Order reference

Please order folding table hinges for folding extension leaf separately.

### Installation



Extension leaf frame with two folding extension leaves: Dimensions exemplary for folding extension leaf 2 x 500 mm, table width 1,000 mm



Extension leaf frame with one folding extension leaf: Dimensions exemplary for folding extension leaf 1 x 1,000 mm, table width 1,000 mm

