

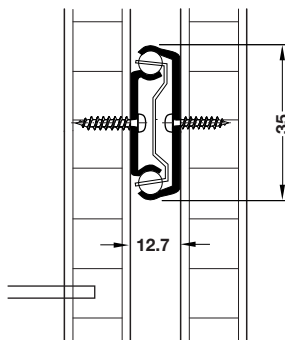
### Accuride 2132, single extension

Load bearing capacity up to 35 kg

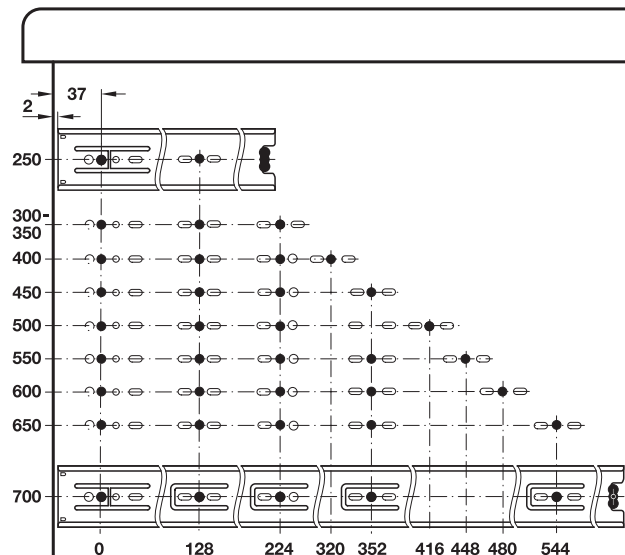


- > Version: For easy installation, can be removed using release lever, with hold-in device for holding in closed position
- > Adjustment facility: Max. height adjustment  $\pm 1.6$  mm, for adjusting drawer front panel
- > Material: Steel
- > Finish: Galvanized
- > Dim.: Max. drawer width = internal cabinet width – 25.4 mm
- > Installation: At drawer, side mounted

#### Installation



#### Drilling pattern



Installation length L mm	Extension length AL mm	Cat. No.
250	163	422.40.925
300	205	422.40.930
350	260	422.40.935
400	281	422.40.940
450	331	422.40.945
500	376	422.40.950
550	415	422.40.955
600	451	422.40.960
650	488	422.40.965
700	526	422.40.970

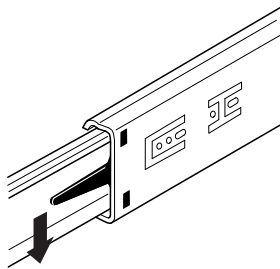
Packing: 1 pair



9

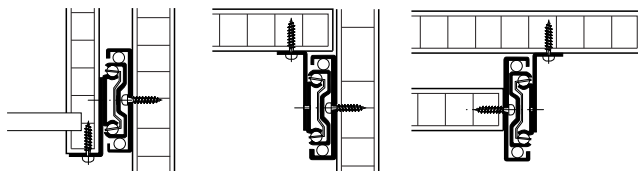
Ball Bearing Runners

#### Functionality



Remove by operating the release lever in the drawer rail.

#### Mounting options with 633 mounting bracket



Drawers

Platforms

Shelves

633 mounting bracket

► MB 9.294

Information

► MB 9.265

DGH-M 2021, HDE-en, 11/20; Dimensional data not binding. We reserve the right to alter specifications without notice.