

Häfele Red Jig Universal drilling jig



- > Drilling jig for furniture connectors and popular furniture fittings from Häfele
- > Exact, dimensionally accurate drilling with the new depth gauge system
- > Interchangeable drill guides allow quick change of the drilling pattern
- > Adjusted to intervals of 32
- > Suitable for series drilled holes
- > Front edge drill holes for panel thickness of 12–60 mm



Order reference

If no basic components of the Red Jig drilling jig are at hand, the **basic jig** Cat. No.: **001.25.600** must also be ordered.

→ Häfele Red Jig Drilling jig basic set



- > With lasered measuring scale for aligning the insert plates

Supplied with

1 basic jig	001.25.600
1 drill guide for hole system 5 mm	001.25.620
1 depth gauge 15 for drill bit Ø 3, 5, 8, 10 mm with depth gauge, stop ring, spiral spring	001.25.770
with twist drill bit for wood, HM Ø 5 mm	001.06.683

	Cat. No.
Häfele Red Jig drilling jig basic set	001.25.890

Packing: 1 set

Order reference

Please order additional accessories separately.

→ Häfele Red Jig Supplement for Minifix® 15 cabinet connector



Supplied with

1 Minifix® 12/15 drill guide for tightening distance 24 and 34 mm	001.25.660
1 depth gauge 32 with depth gauge, stop ring, spiral spring	001.25.771
with multi-spur drill bit, HM Ø 15 mm, RI	001.06.662

	Cat. No.
Red Jig supplement for Minifix® 15	001.25.891

Packing: 1 set

→ Häfele Red Jig Supplement for Minifix® 12 cabinet connector



Supplied with

1 Minifix® 12/15 drill guide for tightening distance 24 and 34 mm	001.25.660
1 depth gauge 32 with depth gauge, stop ring, spiral spring	001.25.771
with multi-spur drill bit, HM Ø 12 mm, RI	001.06.661

	Cat. No.
Häfele Red Jig supplement for Minifix® 12	001.25.892

Packing: 1 set



→ Häfele Red Jig Supplement for Rafix 20 cabinet connector



Note

The Rafix 20 drill guide is suitable for following connectors with identical drilling patterns:
Rafix Tab, Slimfix, Onefix, Pushfix, Rafix HC.
The Rafix 20 drill guide can be adjusted to suit other Tab connectors, e.g. Tab 18, Rafix 20 S, Tab 20 HC, using the scale on the basic jig.

Supplied with

1 Rafix 20, Tab 18, One Fix drill guide	001.25.625
1 Depth gauge 32	001.25.771
with depth gauge, stop ring, spiral spring	
with multi-spur drill bit, HM, 3-spur, Ø 20 mm, RI, for 19 mm wood thickness, with countersinker	001.24.417

	Cat. No.
Häfele Red Jig supplement for Rafix 20	001.25.821

Packing: 1 piece

Order reference

If no basic components of the Red Jig drilling jig are at hand, the **basic jig** Cat. No.:**001.25.600** must also be ordered.

→ Häfele Red Jig Supplement for Tab 18 cabinet connector



Supplied with

1 Rafix 20, Tab 18, One Fix drill guide	001.25.625
1 Depth gauge 32	001.25.771
with depth gauge, stop ring, spiral spring	
with multi-spur drill bit, HM, 3-spur, Ø18 mm, RI	001.24.454

	Cat. No.
Häfele Red Jig supplement for Tab 18	001.25.893

Packing: 1 set

→ Häfele Red Jig Supplement for Maxifix cabinet connector



Note

The Maxifix drill guide can be adjusted to suit other connectors, e.g. Häfele Ixconnect K 36/30, using the scale on the basic jig. Please check hole diameter before use.

Supplied with

1 Maxifix drill guide, tightening distance adjustable from 55 to 35 mm	001.25.643
1 Depth gauge 48	001.25.772
with depth gauge, stop ring, spiral spring	
with HM multi-spur drill bit, Ø 35 mm, RI	001.06.669
1 Insert 10 mm	001.25.761

	Cat. No.
Häfele Red Jig supplement for Maxifix	001.25.894

Packing: 1 set

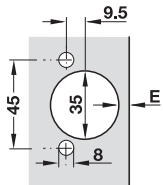
DGH-M 2021, HDE-en, 1/120; Dimensional data not binding. We reserve the right to alter specifications without notice.



→ Häfele Red Jig Supplement for concealed hinges



For concealed hinges 35 mm, drilling dim. 45/9.5



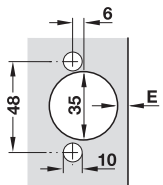
Supplied with

1 Drill guide for concealed hinges 35 mm, 45/9.5	001.25.732
1 Depth gauge 48	001.25.772
with depth gauge, stop ring, spiral spring	
with HM multi-spur drill bit Ø 35 mm, RI	001.06.669

	Cat. No.
Ø 35 mm, drilling dim. 45/9.5	001.25.832

Packing: 1 set

For concealed hinges 35 mm, drilling dim. 48/6



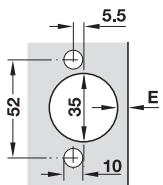
Supplied with

1 Drill guide for concealed hinges 35 mm, 48/6	001.25.731
1 Depth gauge 48	001.25.772
with depth gauge, stop ring, spiral spring	
with multi-spur drill bit, HM Ø 35 mm, RI	001.06.669

	Cat. No.
Ø 35 mm, drilling dim. 48/6	001.25.831

Packing: 1 set

For concealed hinges 35 mm, drilling dim. 52/5.5



Supplied with

1 Drill guide for concealed hinges 35 mm, 52/5.5	001.25.730
1 Depth gauge 48	001.25.772
with depth gauge, stop ring, spiral spring	
with multi-spur drill bit, HM Ø 35 mm, RI	001.06.669

	Cat. No.
Ø 35 mm, drilling dim. 52/5.5	001.25.830

Packing: 1 set

→ Häfele Red Jig Systainer®



- > Area of application: For securely packed and clearly organised storage of the Häfele Red Jig basic set and many individual components
- > Version: With rubber foam inlay

Supplied with

1 Systainer®	008.06.552
1 Rubber foam inlay	008.06.519

	Cat. No.
Häfele Red Jig Systainer®	001.25.895

Packing: 1 piece



→ Accessories

Häfele Red Jig Basic jig



- > Area of application: As body, as supplement in combination with locating ruler
- > Material: Aluminium
- > Finish/colour: Anodized, Red
- > With lasered measuring scale for aligning the insert plates

Supplied with

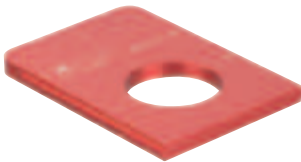
- 1 basic jig without drill guide for equipping with drill guides, with stop plates
- 3 front edge inserts Ø 8 mm, continuously adjustable for different material thicknesses
- 1 marking pin 3/5 mm

	Cat. No.
Basic jig	001.25.600
Packing: 1 piece	

Order reference

Please order accessories separately.
The suitable Systainer® can be ordered separately.

Häfele Red Jig Drill guides for connectors and series drilled holes



	Cat. No.
For Minifix® 12/15	001.25.660
For Maxifix, tightening distances 55 and 35 mm, adjustable	001.25.643
For Rafix 20, Tab 18, One Fix	001.25.625
For hole system at intervals of 37/69 mm, group of holes	001.25.620
For concealed hinges Ø 35 mm, 52/5.5	001.25.730
For concealed hinges Ø 35 mm, 48/6	001.25.731
For concealed hinges Ø 35 mm, 45/9.5	001.25.732

Packing: 1 piece

Häfele Red Jig Depth gauges



15 mm depth gauge 32 mm depth gauge 48 mm depth gauge

Supplied with

- 1 depth gauge
- 1 stop ring
- 1 spiral spring

	Cat. No.
Depth gauge 15 mm, up to drill bit Ø 3–10 mm	001.25.770
Depth gauge 32 mm, up to drill bit Ø 12–25 mm	001.25.771
Depth gauge 48 mm, up to drill bit Ø 26–40 mm	001.25.772

Packing: 1 piece

Other accessories



Marking pin

Stop ring

Insert



Marking gauge

Stop plate

	Cat. No.
Stop plate with 2 special screws	001.25.063
Stop ring for HS twist drill bit Ø 8 mm	001.42.683
Stop ring for HS twist drill bit Ø 10 mm	001.42.693
Insert 5 mm	001.25.763
Insert 8 mm	001.25.760
Insert 10 mm	001.25.761
Insert 11 mm	001.25.762
Marking pin Ø 3/5 mm	001.25.766
Marking gauge	001.27.060

Packing: 1 piece



→ Drill bit for Häfele Red Jig

Twist drill bit for wood, HM, total length 130 mm, shank Ø 8 mm (depth gauge 15)



> With hexagonal reception 1/4"

Diameter mm	Cat. No.
3	001.06.682
5	001.06.683
8	001.06.686
10	001.06.687

Packing: 1 piece

Multi-spur drill bit, HM, total length 130 mm, shank Ø 10 mm (depth gauge 32 and 48)



> With hexagonal reception 1/4"

Diameter mm	Cat. No.
12	001.06.661
15	001.06.662
35	001.06.669

Packing: 1 piece

Multi-spur drill bit, HM/HW, 3-spur, total length 130 mm, shank Ø 10 mm (depth gauge 32 and 48)



> With hexagonal reception 1/4"

	Diameter mm	Version	Cat. No.
HM multi-spur drill bit	18	–	001.24.454
HW multi-spur drill bit	20	With countersinker, for wood thickness 19 mm	001.24.417

Packing: 1 piece

Twist drill bit for wood, HS, total length 110 mm



> With hexagonal reception 1/4"

Diameter mm	Cat. No.
8	001.20.508
10	001.20.510

Packing: 1 piece

Universal bit holder with quick release chuck



- > Drive: 1/4"
- > Version: With permanent magnet
- > Length: 60 mm
- > Chuck: 1/4"

	Cat. No.
Universal bit holder	006.37.250

Packing: 1 piece