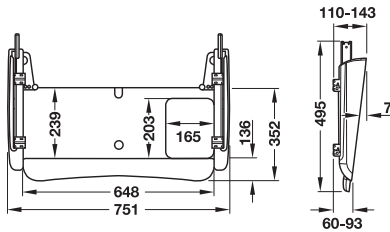


→ With large keyboard tray



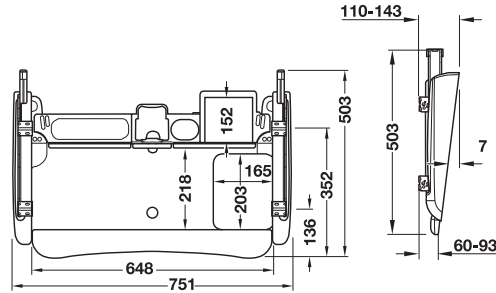
- > Material: Keyboard tray: Plastic, runners: Steel
- > Finish/colour: Powder coated, Black
- > Height adjustment: Adjustable to 7 settings with mounting brackets
- > Load bearing capacity: 34 kg
- > Installation: For screw fixing, for internal and external installation
- > Version: With palm rest, single extension, soft pull out mechanism, shelf angle -7° (permanent pre-setting), with hold in and hold out device, with keyboard tray for right hand or right handed mouse surface

Supplied with

- 1 Extending tray
- 1 Mouse pad
- 1 Installation template
- 1 Set of fixing material

	Cat. No.
Extending tray for keyboard	632.52.300
Packing: 1 piece	

→ With additional storage compartment



- > Material: Keyboard tray: Plastic, runners: Steel
- > Finish/colour: Powder coated, black
- > Height adjustment: Adjustable to 7 settings
- > Load bearing capacity: 45 kg
- > Installation: For screw fixing, for internal and external installation
- > Version: With storage compartments for utensils, with gel palm rest, full extension, shelf angle adjustable to -7° , $-3,5^\circ$ or 0° , with hold in device, hold out device, concealed ball bearing runners, with large keyboard tray for right or left handed mouse surface

Supplied with

- 1 keyboard tray
- 1 mouse pad
- 1 installation template
- 1 set of fixing material

	Cat. No.
Extending tray for keyboard	632.52.310
Packing: 1 piece	

