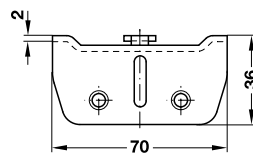
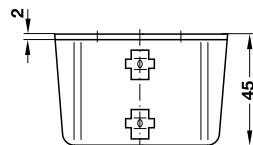
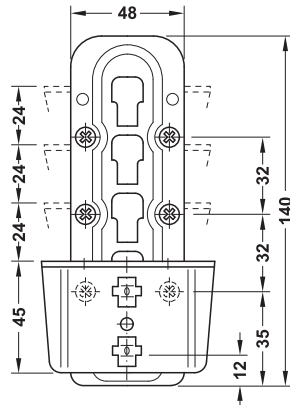
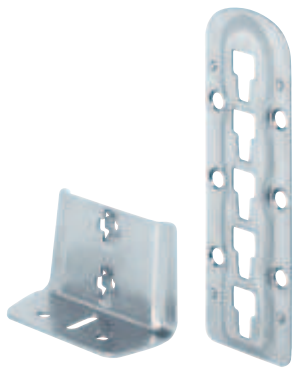


Bed connector for central-tie bar and slatted frame support

Height adjustable

- > Area of application: For single and double beds as slatted frame/sofa frame or central tie-bar support
- > Adjustment facility: Three-stage vertical adjustment, 4 attachment positions
- > Installation: For screw fixing



Installation reference

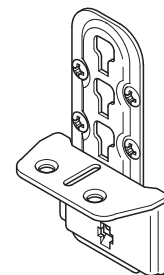
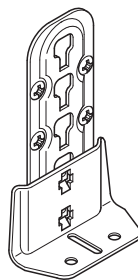
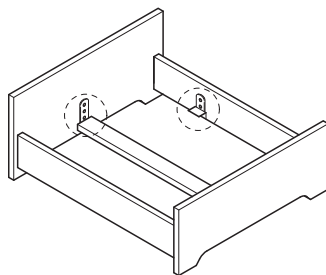
When used on double beds with a 35 mm thick central tie-bar, the mounting plates must be mounted on the head and foot section **5 mm higher** than those on the side panels so that the supporting surfaces of the brackets and the central tie-bar are level.

Supplied with

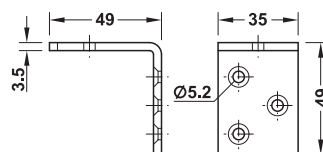
- 1 mounting plate
- 1 bracket

Height mm	Material	Finish	Cat. No.
140	Steel	Blue galvanized	273.41.550

Packing: 1 piece



Bed bracket



- > Area of application: For supporting the slatted frame
- > Installation: For screw fixing
- > Material thickness: 3.5 mm

Finish	Material	Cat. No.
Galvanized	Steel	260.25.986

Packing: 50 pieces