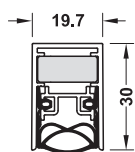
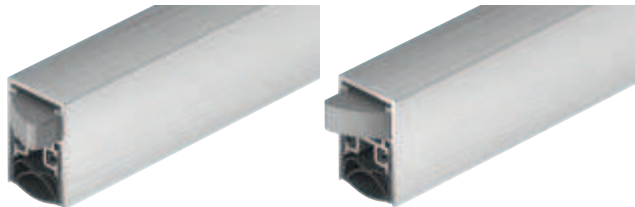
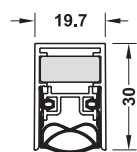


DDS 20 Retractable door seal



Single-side release

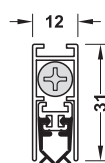
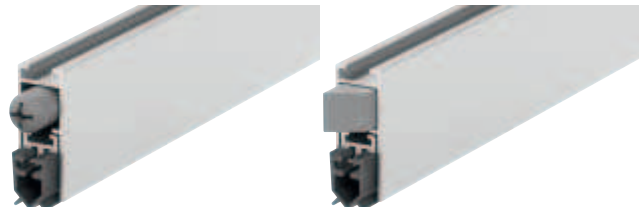
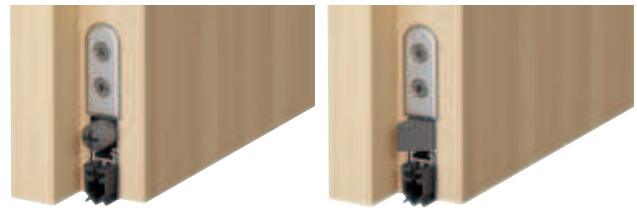


Double-side release

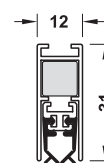
- > Suitable for wet rooms
- > Rustproof interior mechanism



DDS 12 Retractable door seal



Single-side release



Double-side release

- > Area of application: For soundproofing doors (DIN 4109), for fire resistant and smoke control doors (BS and UL certified)
- > Material: Carrier: Aluminium, sealing profile: Silicone, self-extinguishing
- > Finish: Carrier: Unfinished, sealing profile: Grey
- > Version: With single-side or double-side release (optional)
- > Sound proofing value: 42 dB with 7 mm floor gap
- > Sealing height: ≤11 mm
- > Installation: For full mortice fitting, with mounting bracket
- > Installation dim.: Groove: 12 x 31 mm
- > Mounting: For DIN left hand and DIN right hand use

Supplied with

- 1 retractable door seal
- 2 mounting brackets with screws
- 2 release plates with screw

Length mm	Can be shortened to mm	Single-side release	Double-side release
630	505	950.05.340	–
730	605	950.05.341	950.05.961
830	705	950.05.342	950.05.962
930	805	950.05.343	950.05.963
1030	905	950.05.344	950.05.964
1130	1,005	950.05.345	950.05.965

Thresholds

► AH 6.21

6



- > Area of application: For soundproof doors (DIN 4109), for smoke control doors in compliance with EN 1634-3, for fire resistant doors in compliance with EN 1634-1
- > Material: Carrier: Aluminium, sealing profile: Silicone, self-extinguishing
- > Finish: Carrier: Unfinished, sealing profile: Grey
- > Version: With single-side or double-side release (optional)
- > Sound proofing value: 51 dB with 7 mm floor gap
- > Sealing height: ≤12 mm
- > Installation: For full mortice fitting, with fixing brackets
- > Installation dim.: Groove: 20 x 30 mm
- > Mounting: For DIN left hand and DIN right hand use
- > Can be prepared for shoot bolt (optional)

Supplied with

- 1 retractable door seal
- 2 fixing brackets with screws
- 1 release plate with screw with single-side release,
- 2 release plates with screws with double-side release

Length mm	Can be shortened to mm	Single-side release	Double-side release
630	583	950.05.910	–
730	708	950.05.911	950.05.921
830	708	950.05.912	950.05.922
930	833	950.05.913	950.05.923
1030	958	950.05.914	950.05.924
1130	1,083	950.05.915	950.05.925